

Stear Family

by

Judy K. Roatcap-Haselwood

Table of Contents

Outline Descendant Tree of John K. Stear	2
Kinship Report of John K. Stear	4
John K. and Mary J. Stear.....	7
Wilmer C. and Mary S. (Newinham) Stear.....	15
Laurence and Frances Stear	17
Jacob L. and Mable Rebecca (Handley) Stear	19
Cyrus William and Myrtle Esther (Stear) Tharp.....	24
Lyal and Ethel Viola (Stear) Troxel	27
James Stear	29
Harry Mead and Lydia Jane (Stear) DeVinny	31
John and Floretta M. (Stear) Kinnan	36
Earl J. and Cora Kinnan.....	42
John Birt and Elizabeth M. (Handley) Stear.....	45
Verna L. (Stear) and John White	48
Eleana A. Stear	51
Martin Franklin and Mary Elizabeth (Stear) Stiver	52
Lemuel H. and May (Stivers) Long	60
Lydia Clarissa Stiver.....	63
Alfred Clarke and Grace (Nix) Stiver.....	65
Luther Ray and Neva L. Stiver	68
John N. Stiver	71
Henry Ward and Nellie Mae (Adams) Stiver.....	73
Henry Ward and Florence J. (Lougee) Stiver	77
Elaine (Stiver) Houser	81
Thomas Calvin and Helen Catherine (Stiver) Russell	83
Mary E. Stiver	86
Index	88

Descendants of John K. Stear

1 John K. Stear 1842 - 1915
 .. +Mary J. ? 1844 - 1918
 2 Wilmer C. Stear 1868 -
 +Mary S. Newinham
 3 Rose Stear 1892 -
 3 Elair Stear 1897 -
 3 Glenn Stear 1902 -
 3 Lawrence P. Stear 1910 -
 +Frances V. ?
 4 1st son Stear
 4 2nd son Stear
 4 1st daughter Stear
 4 2nd daughter Stear
 2 Jacob L. Stear 1870 - 1937
 +Mable Rebecca Handley 1877 - 1959
 3 Myrtle Esther Stear 1900 - 1927
 +Cyrus William Tharp 1899 - 1927
 4 Vivian Lucille Tharp
 4 Lola Mae Tharp
 3 Ethel Viola Stear 1907 - 1938
 +Lyal Troxel
 2 James Stear 1871 - 1899
 2 Lydia Jane Stear 1874 - 1961
 +Harry Mead DeVinny 1863 - 1945
 3 John Joel DeVinny, Sr. 1895 - 1969
 +Stella ? 1901 -
 4 John Joel DeVinny, Jr
 4 Donald DeVinny 1921 - 1997
 4 Ralph DeVinny 1924 - 1993
 +Fern ?
 4 Louetta DeVinny 1927 -
 3 Avis Dorothy DeVinny 1899 - 1986
 +William David Cairns 1895 - 1972
 4 Fern Lenore Cairns 1918 - 1997
 +Ferris Sainsbury
 5 Patricia Sainsbury
 +? Magnusson
 3 Verna Viola DeVinny 1902 - 1985
 +Russell McClanahan
 4 William Glenn McClanahan 1921 - 1996
 +Norma Lambert
 5 Kathryn McClanahan
 +George Hummer
 5 Mari McClanahan
 +Devin Rowling
 5 Patric McClanahan
 5 Michael McClanahan
 +Sandra ?
 *2nd Husband of Verna Viola DeVinny:
 +Roy Alexander Daniel Roatcap 1893 - 1954
 4 Barbara June Roatcap 1933 -
 +Harold Sear
 5 Carl Sear
 +Virginia ?
 6 Jacquelyn Sear
 6 Allana Sear
 5 Mark Sear
 +Dori ?
 6 Justin Sear
 5 Scott Sear
 +Cynthia Katrina ?
 6 Scott Sear
 6 Kelly Sear
 5 Gail Sear
 +Rick Losh
 *3rd Husband of Verna Viola DeVinny:
 +Chester P. Meyer 1891 - 1968
 3 Hazel Arta DeVinny 1904 - 1987
 +Ray Henry Schiesswohl
 4 Ray Alvin Schiesswohl 1927 - 2008
 +Mary Jean Yarnell - 2007

..... 5 Steven Schiesswohl
 +Kim ?
 5 Scott Schiesswohl
 5 Debra Schiesswohl
 +David Bailey
 4 Gary Glen Schiesswohl
 3 Pearl Lenore DeVinny 1906 - 1964
 +Edwin Garrison, Sr
 4 Alta Mae Garrison
 +? Cooper
 5 Jimmy Cooper
 5 Gary Cooper
 5 ? Cooper
 4 Jack Garrison
 4 Edwin Garrison, Jr.
 3 Lee Ralph DeVinny 1910 - 1979
 +Hazel ?
 4 Ralph DeVinny
 2 Floretta M. Stear 1876 - 1958
 +John Kinnan, Jr. 1868 - 1953
 3 Ora M. Kinnan 1898 - 1965
 3 Ruth Kinnan 1900 - 1909
 3 Paul A. Kinnan 1904 - 1993
 +Beulah Evadne Tharp 1907 - 2000
 3 Earl J. Kinnan 1910 - 1990
 +Cora ? 1912 - 2001
 4 Dale Kinnan
 2 John Birt Stear 1879 - 1967
 +Elizabeth M. Handley 1884 - 1958
 3 Jacob Stear
 3 Allie Laretta Stear
 2 Verna L. Stear 1882 -
 +John A. S. White 1880 -
 3 Fern White
 3 Virginia White
 3 Mary G. White 1906 -
 3 Florence V. White 1908 -
 3 Ward White 1909 -
 2 Eleana A. Stear 1882 -
 2 Mary Elizabeth Stear 1866 - 1938
 +Martin Franklin Stiver 1861 - 1915
 3 May Stiver 1888 - 1914
 +Lemuel H. Long 1871 - 1917
 4 Homer S. Long 1910 -
 3 Lydia Clarissa Stiver
 3 Alfred Clarke Stiver 1890 - 1973
 +Grace Nix 1889 - 1918
 4 Vera L. Stiver 1913 -
 4 Alfred R. Stiver 1915 -
 3 Luther Ray Stiver 1895 - 1953
 +Neva L. ? 1900 - 1998
 4 Leeucille Stiver 1919 -
 3 John N. Stiver 1898 - 1974
 3 Henry Ward Stiver 1901 - 1991
 +Nellie Mae Adams 1902 - 1973
 4 Allen Stiver 1930 - 1930
 4 Henry Ward Stiver, Jr. 1922 - 1994
 +Florence J. Lougee 1929 - 2008
 5 Kenneth Stiver
 6 Justin Stiver
 5 Elaine Stiver
 +? Houser
 6 Daniel Houser
 4 Frank Stiver
 4 Dale Stiver
 3 Helen Catherine Stiver 1904 - 1977
 +Thomas Calvin Russell 1906 - 1966
 4 1 Russell
 4 2 Russell
 4 3 Russell
 4 Billy Gene Russell 1933 - 1981
 +Melba Jean Staab
 3 Mary E. Stiver 1909 -

Kinship of John K. Stear

Name	Relationship with John Stear	Civil	Canon
?, Cora	Wife of the grandson		
?, Cynthia Katrina	Wife of the 2nd great-grandson		
?, Dori	Wife of the 2nd great-grandson		
?, Fern	Wife of the great-grandson		
?, Frances V.	Wife of the grandson		
?, Hazel	Wife of the grandson		
?, Kim	Wife of the 2nd great-grandson		
?, Lib	Sister-in-law		
?, Mary J.	Wife		
?, Sandra	Wife of the 2nd great-grandson		
?, Stella	Wife of the grandson		
?, Virginia	Wife of the 2nd great-grandson		
Bailey, David	Husband of the 2nd great-granddaughter		
Cairns, Fern Lenore	Great-granddaughter	III	3
Cairns, William David	Husband of the granddaughter		
Cooper, ?	Husband of the great-granddaughter		
Cooper, ?	2nd great-granddaughter	IV	4
Cooper, Gary	2nd great-grandson	IV	4
Cooper, Jimmy	2nd great-grandson	IV	4
DeVinny, Avis Dorothy	Granddaughter	II	2
DeVinny, Donald	Great-grandson	III	3
DeVinny, Harry Mead	Son-in-law		
DeVinny, Hazel Arta	Granddaughter	II	2
DeVinny, John Joel, Jr	Great-grandson	III	3
DeVinny, John Joel, Sr.	Grandson	II	2
DeVinny, Lee Ralph	Grandson	II	2
DeVinny, Louetta	Great-granddaughter	III	3
DeVinny, Pearl Lenore	Granddaughter	II	2
DeVinny, Ralph	Great-grandson	III	3
DeVinny, Ralph	Great-grandson	III	3
DeVinny, Verna Viola	Granddaughter	II	2
Garrison, Alta Mae	Great-granddaughter	III	3
Garrison, Edwin, Jr.	Great-grandson	III	3
Garrison, Edwin, Sr	Husband of the granddaughter		
Garrison, Jack	Great-grandson	III	3
Handley, Elizabeth M.	Daughter-in-law		
Handley, Lizzie	Daughter-in-law		
Handley, Mable Rebecca	Daughter-in-law		
Hummer, George	Husband of the 2nd great-granddaughter		
Kinnan, Dale	Great-grandson	III	3
Kinnan, Earl J.	Grandson	II	2
Kinnan, John, Jr.	Son-in-law		
Kinnan, Ora M.	Granddaughter	II	2
Kinnan, Paul A.	Grandson	II	2
Kinnan, Ruth	Granddaughter	II	2
Lambert, Norma	Wife of the great-grandson		
Losh, Rick	Husband of the 2nd great-granddaughter		
Magnusson, ?	Husband of the 2nd great-granddaughter		
McClanahan, Bill	Great-grandson	III	3
McClanahan, Kathryn	2nd great-granddaughter	IV	4
McClanahan, Kitty	2nd great-granddaughter	IV	4
McClanahan, Mari	2nd great-granddaughter	IV	4

Name	Relationship with John Stear	Civil	Canon
McClanahan, Michael	2nd great-grandson	IV	4
McClanahan, Mike	2nd great-grandson	IV	4
McClanahan, Patric	2nd great-grandson	IV	4
McClanahan, Russell	Husband of the granddaughter		
McClanahan, William Glenn	Great-grandson	III	3
Meyer, Chester P.	Husband of the granddaughter		
Newinham, Mary S.	Daughter-in-law		
Roatcap, Barbara June	Great-granddaughter	III	3
Roatcap, Roy Alexander Daniel	Husband of the granddaughter		
Rowling, Devin	Husband of the 2nd great-granddaughter		
Sainsbury, Ferris	Husband of the great-granddaughter		
Sainsbury, Patricia	2nd great-granddaughter	IV	4
Schiesswohl, Debra	2nd great-granddaughter	IV	4
Schiesswohl, Gary Glen	Great-grandson	III	3
Schiesswohl, Ray Alvin	Great-grandson	III	3
Schiesswohl, Ray Henry	Husband of the granddaughter		
Schiesswohl, Scott	2nd great-grandson	IV	4
Schiesswohl, Steven	2nd great-grandson	IV	4
Sear, Allana	3rd great-granddaughter	V	5
Sear, Carl	2nd great-grandson	IV	4
Sear, Gail	2nd great-granddaughter	IV	4
Sear, Harold	Husband of the great-granddaughter		
Sear, Jacquelyn	3rd great-granddaughter	V	5
Sear, Justin	3rd great-grandson	V	5
Sear, Kelly	3rd great-grandson	V	5
Sear, Mark	2nd great-grandson	IV	4
Sear, Scott	2nd great-grandson	IV	4
Sear, Scott	3rd great-grandson	V	5
Stear, 1st daughter	Great-granddaughter	III	3
Stear, 1st son	Great-grandson	III	3
Stear, 2nd daughter	Great-granddaughter	III	3
Stear, 2nd son	Great-grandson	III	3
Stear, Alice L.	Granddaughter	II	2
Stear, Allie Laretta	Granddaughter	II	2
Stear, Elair	Granddaughter	II	2
Stear, Eleana A.	Daughter	I	1
Stear, Ethel Viola	Granddaughter	II	2
Stear, Floretta M.	Daughter	I	1
Stear, Glenn	Grandson	II	2
Stear, Jacob	Grandson	II	2
Stear, Jacob L.	Son	I	1
Stear, James	Son	I	1
Stear, John Birt	Son	I	1
Stear, John K.	Self		0
Stear, John, Jr.	Self		0
Stear, Lawrence P.	Grandson	II	2
Stear, Lydia Jane	Daughter	I	1
Stear, Myrtle Esther	Granddaughter	II	2
Stear, Rose	Granddaughter	II	2
Stear, Verna L.	Daughter	I	1
Stear, Wilmer C.	Son	I	1
Tharp, Beulah Evadne	Wife of the grandson		
Tharp, Cyrus William	Husband of the granddaughter		

Name	Relationship with John Stear	Civil	Canon
Tharp, Lola Mae	Great-granddaughter	III	3
Tharp, Vivian Lucille	Great-granddaughter	III	3
Troxel, Lyal	Husband of the granddaughter		
White, Fern	Granddaughter	II	2
White, Florence V.	Granddaughter	II	2
White, John A. S.	Son-in-law		
White, Mary G.	Granddaughter	II	2
White, Virginia	Granddaughter	II	2
White, Ward	Grandson	II	2
Yarnell, Mary Jean	Wife of the great-grandson		

Family Group Sheet



Husband: John K. Stear

Born: 01 May 1842
 Source: (1) Census - 1880 United States Census - Family History Library Film 1255135, Canoe, Indiana, Pennsylvania Family History Library Film: 1255135
 NA Film Number: T9-1135
 Page Number 392A.
 (2) Dawson County, NEGenWeb Project - Fairview Cemetery
<http://www.rootsweb.com/~nedawson/cemetery/fairview.html>.
 (3) Census - 1900 U.S. Census Cozad Village, Dawson, NE, <http://www.usgenet.org/usa/ne/county/dawson/ed89-pg120a.txt>.
 (4) Find a Grave Memorial Website,
<http://www.findagrave.com/cgi-bin/fg.cgi?page=gr&GSln=Stear&GSfn=john&GSbyrel=in&GSdyrel=in&GSob=n&GRid=21669205&>.

in: , PA

Married:

Died: 23 Oct 1915

in:

in:

Source: (1) Dawson County, NEGenWeb Project - Fairview Cemetery
<http://www.rootsweb.com/~nedawson/cemetery/fairview.html>.
 (2) Find a Grave Memorial Website,
<http://www.findagrave.com/cgi-bin/fg.cgi?page=gr&GSln=Stear&GSfn=john&GSbyrel=in&GSdyrel=in&GSob=n&GRid=21669205&>.

Burial:

in: Fairview Cemetery, Cozad, Dawson County, NE



Family Group Sheet

Source: (1) Dawson County,
NEGenWeb Project - Fairview
Cemetery
<http://www.rootsweb.com/~nedawson/cemetery/fairview.html>.
(2) Find a Grave Memorial
Website,
<http://www.findagrave.com/cgi-bin/fg.cgi?page=gr&GSln=Stear&GSfn=john&GSbyrel=in&GSdyrel=in&GSob=n&GRid=21669205&>.

Father:

Mother:

Other Spouses:

Notes

Marriage Notes

Wife: Mary J. ?

Born: 27 Jul 1844
Source: (1) Census - 1880 United
States Census - Family History
Library Film 1255135, Family
History Library Film: 1255135
NA Film Number: T9-1135
Page Number 392A.
(2) Dawson County,
NEGenWeb Project - Fairview
Cemetery
<http://www.rootsweb.com/~nedawson/cemetery/fairview.html>.
(3) Census - 1900 U.S. Census
Cozad Village, Dawson, NE,
<http://www.usgennet.org/usa/ne/county/dawson/ed89-pg120a.txt>.

Died: 11 Feb 1918

Source: Dawson County, NEGenWeb
Project - Fairview Cemetery
<http://www.rootsweb.com/~nedawson/cemetery/fairview.html>.

Burial:

Source: Dawson County, NEGenWeb
Project - Fairview Cemetery
<http://www.rootsweb.com/~nedawson/cemetery/fairview.html>.

Father:

Mother:

Other Spouses:

in: , , PA

in:

in: Fairview Cemetery, Cozad,
Dawson County, NE

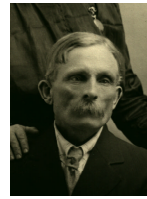


Notes

Family Group Sheet

CHILDREN

1	Name: Wilmer C. Stear	
	Born: Abt. 1868	in: , , PA
M	Source: Census - 1880 United States Census - Family History Library Film 1255135, Family History Library Film: 1255135 NA Film Number: T9-1135 Page Number 392A.	
	Died:	in:
	Burial:	
	Married: 11 Mar 1893	in:
	Source: Lydia Jane Stear-DeVinny hand written note in photo album.	
	Spouse: Mary S. Newinham	



Notes

2	Name: Jacob L. Stear	
	Born: 30 Aug 1870	in: , Indiana County, PA
M	Source: (1) Census - 1880 United States Census - Family History Library Film 1255135, Family History Library Film: 1255135 NA Film Number: T9-1135 Page Number 392A. (2) FamilySearch Ancestral File Submission: AF95-109892, Carole Ann Jensen Tucker 1728 6th Avenue Scottsbluff, NE 69361-2542. (3) Dawson County, NEGenWeb Project - Fairview Cemetery http://www.rootsweb.com/~nedawson/cemetery/fairview.html .	
	Died: 15 Mar 1937	in: Cozad, Dawson County, NE
	Source: (1) FamilySearch Ancestral File Submission: AF95-109892, Carole Ann Jensen Tucker 1728 6th Avenue Scottsbluff, NE 69361-2542. (2) Dawson County, NEGenWeb Project - Fairview Cemetery http://www.rootsweb.com/~nedawson/cemetery/fairview.html . (3) Find a Grave Memorial Website, http://www.findagrave.com/cgi-bin/fg.cgi?page=gsr&GScid=100631&GSln=stear .	
	Burial:	in: Fairview Cemetery, Cozad, Dawson County, NE



Family Group Sheet

2	<p>Source: (1) FamilySearch Ancestral File Submission: AF95-109892, Carole Ann Jensen Tucker 1728 6th Avenue Scottsbluff, NE 69361-2542. (2) Dawson County, NEGenWeb Project - Fairview Cemetery http://www.rootsweb.com/~nedawson/cemetery/fairview.html. (3) Cemetery Record, Fairview Cemetery, Cozad, Dawson County, NB, http://www.findagrave.com/cgi-bin/fg.cgi?page=gr&GSln=stear&GSbyrel=in&GSdyrel=in&GSst=31&GSctry=4&GSob=n&GRid=19222684&. (4) Find a Grave Memorial Website, http://www.findagrave.com/cgi-bin/fg.cgi?page=gsr&GScid=100631&GSln=stear.</p> <p>Married: 04 May 1899 in: Lexington, Dawson County, NE</p> <p>Source: (1) FamilySearch Ancestral File Submission: AF95-109892, Carole Ann Jensen Tucker 1728 6th Avenue Scottsbluff, NE 69361-2542. (2) http://www.rootsweb.com/~nedawson/marriage/maleK.html. (3) Dawson County Marriage Index, http://www.usgennet.org/usa/ne/cou/nty/dawson1/marriage/maleS.html#SS. S.</p> <p>Spouse: Mable Rebecca Handley</p>
---	--

Notes

3	<p>Name: James Stear Born: Abt. 1871 in: , , PA</p> <p>Source: (1) Census - 1880 United States Census - Family History Library Film 1255135, Family History Library Film: 1255135 NA Film Number: T9-1135 Page Number 392A. (2) Dawson County, NEGenWeb Project - Fairview Cemetery http://www.rootsweb.com/~nedawson/cemetery/fairview.html.</p> <p>Married: in: Died: 05 Jun 1899 in:</p> <p>Source: Dawson County, NEGenWeb Project - Fairview Cemetery http://www.rootsweb.com/~nedawson/cemetery/fairview.html.</p> <p>Burial: in: Fairview Cemetery, Cozad, Dawson County, NB</p> <p>Source: Dawson County, NEGenWeb Project - Fairview Cemetery http://www.rootsweb.com/~nedawson/cemetery/fairview.html.</p> <p>Spouse:</p>
---	--



Family Group Sheet

3
M

Notes

4
F
Name: Lydia Jane Stear
Born: 22 Jan 1874 in: , , PA
Source: (1) Headstone Cedar Cemetery,
Montrose County, CO.
(2) Census - 1880 United States
Census - Family History Library
Film 1255135, Family History
Library Film: 1255135
NA Film Number: T9-1135
Page Number 392A.
Died: 22 Jan 1961 in:
Source: Headstone Cedar Cemetery,
Montrose County, CO.
Burial: in: Cedar Cemetery, Montrose County,
CO
Source: Headstone Cedar Cemetery,
Montrose County, CO.
Married: 11 Apr 1891 in: , Dawson County, NE
Source: (1) Headstone Cedar Cemetery,
Montrose County, CO.
(2) Dawson County Marriage Index,
Volume 2, Page 474
<http://www.usgennet.org/usa/ne/cou/nty/dawson1/marriage/maleD.html>.
Spouse: Harry Mead DeVinny



Notes

5
F
Name: Floretta M. Stear
Born: 12 Feb 1876 in: , , PA
Source: (1) Lewis Townsend e-mail 5 June
2000, "Electronic."
(2) Census - 1880 United States
Census - Family History Library
Film 1255135, Family History
Library Film: 1255135
NA Film Number: T9-1135
Page Number 392A.
(3) Dawson County, NEGenWeb
Project - Fairview Cemetery
<http://www.rootsweb.com/~nedawson/cemetery/fairview.html>.
Died: 28 Mar 1958 in: , , NE
Source: Dawson County, NEGenWeb
Project - Fairview Cemetery
<http://www.rootsweb.com/~nedawson/cemetery/fairview.html>.
Burial: in: Fairview Cemetery, Cozad, Dawson
County, NB



Family Group Sheet

5	Source: (1) Dawson County, NEGenWeb Project - Fairview Cemetery http://www.rootsweb.com/~nedawson/cemetery/fairview.html . (2) Find a Grave Memorial Website, http://www.findagrave.com/cgi-bin/fg.cgi?page=gr&GSln=kinnan&GSfn=floretta&GSbyrel=in&GSdyrel=in&GSctry=4&GSob=n&GRid=21668918& .
F	Married: in: Spouse: John Kinnan, Jr.

Notes

<http://www.rootsweb.com/~nedawson/cemetery/fairview.html>

Fairview Cemetery
(Ringgold)

LOCATION: NE 1/4 S12 T9N R24W, Holmes Pct.

From Cozad: at Hwy 21 North & I-80 Interchange, 5 miles South. First burial 1878.


KINNAN, Floretta M. 2/12/1876 3/28/1958

6	Name: John Birt Stear Born: 18 Jan 1879 in: , PA Source: (1) Census - 1880 United States Census - Family History Library Film 1255135, Family History Library Film: 1255135 NA Film Number: T9-1135 Page Number 392A. (2) Social Security Death Index - FamilySearch U.S., John STEAR. (3) Census - 1900 U.S. Census Cozad Village, Dawson, NE, http://www.usgennet.org/usa/ne/county/dawson/ed89-pg120a.txt This source gives date of birth as June 1880.
M	Died: 11 Oct 1967 in: , NE Source: Social Security Death Index - FamilySearch U.S., John STEAR. Burial: in: Mitchell Valley Cemetery, Scotts Bluff County, NE Source: Rootsweb.com, http://www.rootsweb.com/~nescottscemeteries/mitchellvalley.html . Married: in: , Dawson County, NE Source: (1) http://www.rootsweb.com/~nedawson/marriage/maleK.html . (2) Dawson County Marriage Index, http://www.usgennet.org/usa/ne/county/dawson1/marriage/maleS.html#S . Spouse: Elizabeth M. Handley




Notes


Family Group Sheet

7	<p>Name: Verna L. Stear</p> <p>Born: Aug 1882 in: , , PA</p> <p>Source: Census - 1900, http://persi.heritagequestonline.com.ez.lib.wy.us/hqoweb/library/do/census/results/image?surname=stear&givenname=john&series=12&hitcount=8&p=1&urn=urn%3Aproquest%3AUS%3Bcensus%3B17146996%3B132142635%3B12%3B30&searchtype=1&offset=5.</p> <p>Died: in:</p> <p>Burial:</p> <p>Married: 21 May 1905 in: Pocatello, Bannock County, ID</p> <p>Source: Idaho Marriage Records, Volume 3, Page 224 Marriage ID # 87130 http://abish.byui.edu/specialCollections/westernStates/westernStatesRecordDetail.cfm?recordID=87130.</p> <p>Spouse: John A. S. White</p>	
---	---	---

Notes

8	<p>Name: Eleana A. Stear</p> <p>Source: Census - 1900 U.S. Census Cozad Village, Dawson, NE, http://www.usgenet.org/usa/ne/county/dawson/ed89-pg120a.txt.</p> <p>Born: Aug 1882 in: , , PA</p> <p>Source: Census - 1900 U.S. Census Cozad Village, Dawson, NE, http://www.usgenet.org/usa/ne/county/dawson/ed89-pg120a.txt.</p> <p>Married: in:</p> <p>Died: in:</p> <p>Burial:</p> <p>Spouse:</p>	
---	--	---

Notes

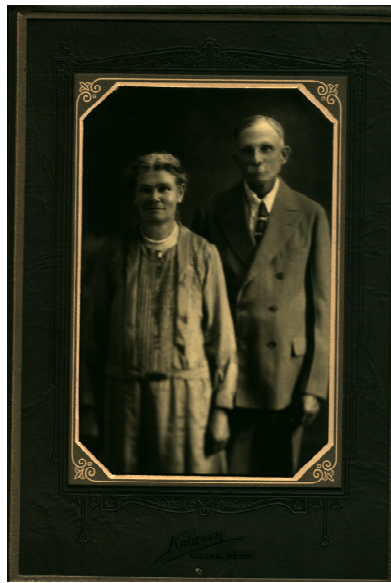
9	<p>Name: Mary Elizabeth Stear</p> <p>Born: 30 Apr 1866 in:</p> <p>Source: Find a Grave Memorial Website, http://www.findagrave.com/cgi-bin/fg.cgi?page=gr&GSsr=81&GSmid=46856204&GRid=21669441&.</p> <p>Died: 29 May 1938 in:</p> <p>Source: Find a Grave Memorial Website, http://www.findagrave.com/cgi-bin/fg.cgi?page=gr&GSsr=81&GSmid=46856204&GRid=21669441&.</p> <p>Burial: in: Mitchell Valley Cemetery, Mitchell, Scotts Bluff County, NE</p> <p>Source: Find a Grave Memorial Website, http://www.findagrave.com/cgi-bin/fg.cgi?page=gr&GSsr=81&GSmid=46856204&GRid=21669441&.</p> <p>Married: in:</p> <p>Spouse: Martin Franklin Stiver</p>	
---	--	---

Prepared by Judy Kay ROATCAP-HASELWOOD

Phone(s): (307) 682-7345

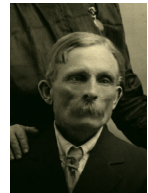
904 Warren Avenue
Gillette, WY 82716
kirby@vcn.com

Family Group Sheet



Husband: Wilmer C. Stear

Born: Abt. 1868 in: , , PA
 Source: Census - 1880 United States Census - Family History
 Library Film 1255135, Family History Library Film:
 1255135
 NA Film Number: T9-1135
 Page Number 392A.
 Married: 11 Mar 1893 in:
 Source: Lydia Jane Stear-DeVinny hand written note in photo
 album.
 Died: in:
 Burial:
 Father: John K. Stear
 Mother: Mary J. ?
 Other Spouses:



Notes

Marriage Notes

Wife: Mary S. Newinham


Born: in:
 Died: in:
 Burial:
 Father:
 Mother:
 Other Spouses:




Notes

Family Group Sheet


CHILDREN

1	Name: Rose Stear Born: Abt. 1892 Source: Census - 1920, http://persi.heritagequestonline.com.ez.lib.wy.us/hqoweb/library/do/census/results/image?surname=stear&givenname=wilmer&series=14&hitcount=1&p=1&urn=urn%3Aproquest%3AUS%3Bcensus%3B14882873%3B107502545%3B14%3B30&searchtype=1&offset=0	in:	
F	Married: Died: Burial: Spouse:	in: in:	


Notes

2	Name: Elair Stear Born: Abt. 1897 Source: Census - 1920, http://persi.heritagequestonline.com.ez.lib.wy.us/hqoweb/library/do/census/results/image?surname=stear&givenname=wilmer&series=14&hitcount=1&p=1&urn=urn%3Aproquest%3AUS%3Bcensus%3B14882873%3B107502545%3B14%3B30&searchtype=1&offset=0	in:	
F	Married: Died: Burial: Spouse:	in: in:	

Notes

3	Name: Glenn Stear Born: Abt. 1902 Source: Census - 1920, http://persi.heritagequestonline.com.ez.lib.wy.us/hqoweb/library/do/census/results/image?surname=stear&givenname=wilmer&series=14&hitcount=1&p=1&urn=urn%3Aproquest%3AUS%3Bcensus%3B14882873%3B107502545%3B14%3B30&searchtype=1&offset=0	in:	
M	Married: Died: Burial: Spouse:	in: in:	

Notes

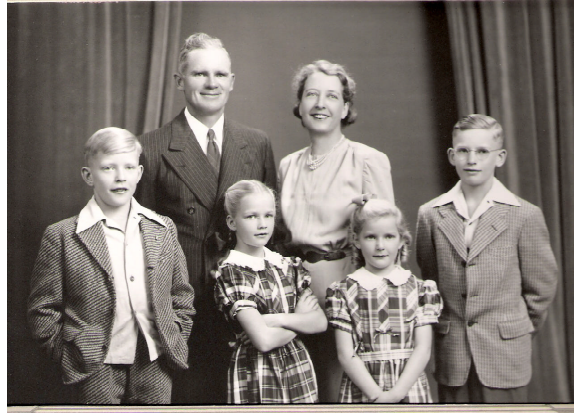
4	Name: Lawrence P. Stear Born: Abt. 1910 Source: Census - 1920, http://persi.heritagequestonline.com.ez.lib.wy.us/hqoweb/library/do/census/results/image?surname=stear&givenname=wilmer&series=14&hitcount=1&p=1&urn=urn%3Aproquest%3AUS%3Bcensus%3B14882873%3B107502545%3B14%3B30&searchtype=1&offset=0	in:	
M	Died: Burial: Married: Spouse: Frances V. ?	in: in:	

Notes

Prepared By:
Judy Kay ROATCAP-HASELWOOD
904 Warren Avenue
Gillette, WY 82716
kirby@vcn.com

Phone(s): (307) 682-7345

Family Group Sheet



Husband: Lawrence P. Stear

Born: Abt. 1910
 Source: Census - 1920,
<http://persi.heritagequestonline.com.ez.lib.wy.us/hqoweb/library/do/census/results/image?surname=stear&givenname=wilmer&series=14&hitcount=1&p=1&urn=urn%3Aproquest%3AUS%3Bcensus%3B14882873%3B107502545%3B14%3B30&searchtype=1&offset=0>.

in:

Married:
 Died:
 Burial:
 Father: Wilmer C. Stear
 Mother: Mary S. Newinham
 Other Spouses:

in:

in:



Notes

Marriage Notes

Wife: Frances V. ?

Born:
 Died:
 Burial:
 Father:
 Mother:
 Other Spouses:

in:

in:



Notes

CHILDREN

1	Name: 1st son Stear	
	Born:	in:
M	Married:	in:
	Died:	in:
	Burial:	
	Spouse:	



Notes

Family Group Sheet

2	Name: 2nd son Stear		
	Born:	in:	
M	Married:	in:	
	Died:	in:	
	Burial:		
	Spouse:		

Notes

3	Name: 1st daughter Stear		
	Born:	in:	
F	Married:	in:	
	Died:	in:	
	Burial:		
	Spouse:		

Notes

4	Name: 2nd daughter Stear		
	Born:	in:	
F	Married:	in:	
	Died:	in:	
	Burial:		
	Spouse:		

Notes

Family Group Sheet



Husband: Jacob L. Stear

Born: 30 Aug 1870

in: , Indiana County, PA

Source: (1) Census - 1880 United States Census - Family History Library Film 1255135, Family History Library Film: 1255135 NA Film Number: T9-1135 Page Number 392A.
(2) FamilySearch Ancestral File Submission: AF95-109892, Carole Ann Jensen Tucker
1728 6th Avenue
Scottsbluff, NE 69361-2542.
(3) Dawson County, NEGenWeb Project - Fairview Cemetery
<http://www.rootsweb.com/~nedawson/cemetery/fairview.html>.

Married: 04 May 1899

in: Lexington, Dawson County, NE

Source: (1) FamilySearch Ancestral File Submission: AF95-109892, Carole Ann Jensen Tucker
1728 6th Avenue
Scottsbluff, NE 69361-2542.
(2)
<http://www.rootsweb.com/~nedawson/marriage/maleK.html>.
(3) Dawson County Marriage Index,
<http://www.usgennet.org/usa/ne/county/dawson1/marriage/maleS.html#SS>.

Died: 15 Mar 1937

in: Cozad, Dawson County, NE



Family Group Sheet

Source: (1) FamilySearch Ancestral
File Submission: AF95-
109892, Carole Ann Jensen
Tucker
1728 6th Avenue
Scottsbluff, NE 69361-2542.
(2) Dawson County,
NEGenWeb Project - Fairview
Cemetery
<http://www.rootsweb.com/~nedawson/cemetery/fairview.html>.
(3) Find a Grave Memorial
Website,
[http://www.findagrave.com/cgi-](http://www.findagrave.com/cgi-bin/fg.cgi?page=gsr&GScid=100631&GSln=stear)
[bin/fg.cgi?page=gsr&GScid=100631&GSln=stear](http://www.findagrave.com/cgi-bin/fg.cgi?page=gsr&GScid=100631&GSln=stear).

Burial:

in: Fairview Cemetery, Cozad,
Dawson County, NE

Source: (1) FamilySearch Ancestral
File Submission: AF95-
109892, Carole Ann Jensen
Tucker
1728 6th Avenue
Scottsbluff, NE 69361-2542.
(2) Dawson County,
NEGenWeb Project - Fairview
Cemetery
<http://www.rootsweb.com/~nedawson/cemetery/fairview.html>.
(3) Cemetery Record, Fairview
Cemetery, Cozad, Dawson
County, NB,
[http://www.findagrave.com/cgi-](http://www.findagrave.com/cgi-bin/fg.cgi?page=gr&GSln=stear&GSbyrel=in&GSdyrel=in&GSst=31&GSctry=4&GSob=n&GRid=19222684)
[bin/fg.cgi?page=gr&GSln=stear&GSbyrel=in&GSdyrel=in&GSst=31&GSctry=4&GSob=n&GRid=19222684](http://www.findagrave.com/cgi-bin/fg.cgi?page=gr&GSln=stear&GSbyrel=in&GSdyrel=in&GSst=31&GSctry=4&GSob=n&GRid=19222684)&.
(4) Find a Grave Memorial
Website,
[http://www.findagrave.com/cgi-](http://www.findagrave.com/cgi-bin/fg.cgi?page=gsr&GScid=100631&GSln=stear)
[bin/fg.cgi?page=gsr&GScid=100631&GSln=stear](http://www.findagrave.com/cgi-bin/fg.cgi?page=gsr&GScid=100631&GSln=stear).

Father: John K. Stear

Mother: Mary J. ?

Other Spouses:

Notes

Marriage Notes

<http://www.rootsweb.com/~nedawson/marriage/maleK.html>

DAWSON COUNTY MARRIAGE INDEX - MALE
1873 - 1937

GROOM BRIDE VOL. # PAGE #
STEAR, Jacob L. HANDLEY, Rebecca M. 3 528

Family Group Sheet

Wife: Mable Rebecca Handley

Born: 25 Dec 1877 in: Cozad, Dawson County, NE
 Source: (1) FamilySearch Ancestral
 File Submission: AF95-
 109892, Carole Ann Jensen
 Tucker
 1728 6th Avenue
 Scottsbluff, NE 69361-2542.
 (2) Dawson County,
 NEGenWeb Project - Fairview
 Cemetery
<http://www.rootsweb.com/~nedawson/cemetery/fairview.html>.
 Died: 15 Sep 1959 in: Cozad, Dawson County, NE
 Source: (1) FamilySearch Ancestral
 File Submission: AF95-
 109892, Carole Ann Jensen
 Tucker
 1728 6th Avenue
 Scottsbluff, NE 69361-2542.
 (2) Dawson County,
 NEGenWeb Project - Fairview
 Cemetery
<http://www.rootsweb.com/~nedawson/cemetery/fairview.html>.
 Burial: in: Fairview Cemetery, Cozad,
 Dawson County, NE
 Source: (1) FamilySearch Ancestral
 File Submission: AF95-
 109892, Carole Ann Jensen
 Tucker
 1728 6th Avenue
 Scottsbluff, NE 69361-2542.
 (2) Dawson County,
 NEGenWeb Project - Fairview
 Cemetery
<http://www.rootsweb.com/~nedawson/cemetery/fairview.html>.
 Father: John M. Handley
 Mother: Auderiah Ellen Anderson
 Other Spouses:

**Notes**

<http://www.findagrave.com/cgi-bin/fg.cgi?page=gr&GSln=stear&GSbyrel=in&GSdyrel=in&GSst=31&GSctry=4&GSob=n&GRid=19221992>&
 OBIT (Partial): Cozad, Nebraska-Mrs Rebecca Mable Stear, daughter of John M and Addie Handle, was born on Decmeber 25, 1877. She was the first white child to be born in Cozad. Death came for her on September 15 at the Cozad Community Hospital at the age of 81 years.

"Her parents homesteaded southwest of Cozad in 1876 and it was in this community that Mrs Stear grew to womanhood and later established a home after her marriage to Jacob L Stear on May 4, 1899.

"Two daughters were born to this union, Myrtle Esther and Ethel Viola. After they had married and had young families, they were taken by death. Mrs Stear helped beyond the line of duty in the care of these families in their time of need.

"Mrs Stear has been a long time member of the Evangelical United Brethren Church having had continuous membership for 58 years. They first worshipped in the Fairview Church southwest of town and then at First Church. She has been a loyal and faithful member of this church over these many years

Burial::
 Fairview Cemetery
 Dawson County

Family Group Sheet

Nebraska, USA

CHILDREN

1	Name: Myrtle Esther Stear Born: 23 Jul 1900 Source: FamilySearch Ancestral File Submission: AF95-109892, Carole Ann Jensen Tucker 1728 6th Avenue Scottsbluff, NE 69361-2542. Died: 29 Mar 1927 Source: FamilySearch Ancestral File Submission: AF95-109892, Carole Ann Jensen Tucker 1728 6th Avenue Scottsbluff, NE 69361-2542.	in: Cozad, Dawson County, NE
	Burial: Source: FamilySearch Ancestral File Submission: AF95-109892, Carole Ann Jensen Tucker 1728 6th Avenue Scottsbluff, NE 69361-2542.	in: Fairview Cemetery, Cozad, Dawson County, NB
F	Married: 15 Sep 1921 Source: (1) http://www.rootsweb.com/~nedawson/marriage/maleK.html . (2) Dawson County Marriage Index, http://files.usgwarchives.org/ne/dawson/marriage/groomdh.txt . Spouse: Cyrus William Tharp	in: , Dawson County, NB



Notes

<http://www.rootsweb.com/~nedawson/cemetery/fairview.html>

Fairview Cemetery

(Ringgold)

LOCATION: NE 1/4 S12 T9N R24W, Holmes Pct.

From Cozad: at Hwy 21 North & I-80 Interchange, 5 miles South. First burial 1878.

THARP, Myrtle E. 23 July 1900 29 Mar 1927

[http://www.findagrave.com/cgi-](http://www.findagrave.com/cgi-bin/fg.cgi?page=gr&GSln=tharp&GSbyrel=in&GSdyrel=in&GSst=31&GSctry=4&GSob=n&GRid=23226722&)

[bin/fg.cgi?page=gr&GSln=tharp&GSbyrel=in&GSdyrel=in&GSst=31&GSctry=4&GSob=n&GRid=23226722&](http://www.findagrave.com/cgi-bin/fg.cgi?page=gr&GSln=tharp&GSbyrel=in&GSdyrel=in&GSst=31&GSctry=4&GSob=n&GRid=23226722&)

NOTE: Obituary, paper and date unknown: "OBITUARY---Myrtle Esther Stear, daughter of Mr. and Mrs. J. L. Stear, was born July 23, 1900 at Cozad, Neb., and passed away March 29, 1927 at her home south of the city, following a lingering illness.

"The deceased lived continuously in this locality. She graduated from the Cozad High School after completing the rural school work near her home. She was united in marriage Sept. 15, 1921 to Cyrus William Tharp. To this union were born two daughters, Vivian Lucille and Lola Mae. For the past six months she has been a constant sufferer, but always in the best of spirits she hoped to be spared to rear her two girls.

"She was converted and united with the church in February, 1912, in which organization she has been a faithful follower of the Lord. Though her passing seems untimely, she has been able to exert a great influence for good and for strengthening of the Christian life of those who knew her. She had a constant and abiding trust in the Lord.

"She was always at Sunday School and the services of the church when ever her health would permit. Prayer and the reading of the Bible was often her request and was always welcomed by her, and the close of her earthly pilgrimage, which came Tuesday afternoon at 5:30 o'clock, was calm and quiet as her life had been.

"Those who knew her best testify that she was a faithful wife, a loving mother, daughter, sister and friend.

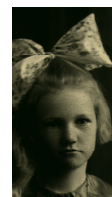
"She leaves to mourn her departure her husband, two daughters, father, mother and one sister, Mrs Lyal Troxel, all of this city, and also many other relatives and a host of friends.

"Funeral services were conducted Friday afternoon at the home and interment at Fairview Cemetery."

Family Group Sheet

Burial:
 Fairview Cemetery
 Dawson County
 Nebraska, USA

2	Name: Ethel Viola Stear Born: 28 Jul 1907 in: , Dawson County, NB Source: FamilySearch Ancestral File Submission: AF95-109892, Carole Ann Jensen Tucker 1728 6th Avenue Scottsbluff, NE 69361-2542.
	Died: 29 Nov 1938 in:
	Source: FamilySearch Ancestral File Submission: AF95-109892, Carole Ann Jensen Tucker 1728 6th Avenue Scottsbluff, NE 69361-2542.
F	Burial: in: Fairview Cemetery, Cozad, Dawson County, NB
	Source: Cemetery Record, Fairview Cemetery, Cozad, Dawson County, NB, http://www.findagrave.com/cgi-bin/fg.cgi?page=gr&GSln=troxel&GSbyrel=in&GSdyrel=in&GSst=31&GSentry=4&GSob=n&GRid=21669234& .
	Married: in:
	Spouse: Lyal Troxel



Notes

Prepared By:
 Judy Kay ROATCAP-HASELWOOD
 904 Warren Avenue
 Gillette, WY 82716
 kirby@vcn.com

Phone(s): (307) 682-7345

Family Group Sheet



Husband: Cyrus William Tharp

Born: 22 Oct 1899	in: Dahlgren, Hamilton County, IL
Source: http://www.rootsweb.com/~nedawson/cemetery/fairview2.html#T .	
Married: 15 Sep 1921	in: , Dawson County, NB
Source: (1)	
http://www.rootsweb.com/~nedawson/marriage/maleK.html .	
(2) Dawson County Marriage Index,	
http://files.usgwarchives.org/ne/dawson/marriage/groomdh.txt .	
Died: 18 Apr 1927	in: Gering Scotts Bluff County, NE
Source: http://www.rootsweb.com/~nedawson/cemetery/fairview2.html#T .	
Burial:	in: Fairview Cemetery, Cozad, ?Dawson County, NB
Source: Dawson County, NEGenWeb Project - Fairview Cemetery	
http://www.rootsweb.com/~nedawson/cemetery/fairview.html .	
Father:	
Mother:	
Other Spouses:	



Notes

<http://www.rootsweb.com/~nedawson/cemetery/fairview.html>

Fairview Cemetery
(Ringgold)

LOCATION: NE 1/4 S12 T9N R24W, Holmes Pct.

From Cozad: at Hwy 21 North & I-80 Interchange, 5 miles South. First burial 1878.

THARP, Cyrus W. 22 Oct 1899 18 Apr 1927

Marriage Notes

<http://www.rootsweb.com/~nedawson/marriage/maleK.html>

Family Group Sheet

DAWSON COUNTY MARRIAGE INDEX - MALE
1873 - 1937

GROOM BRIDE VOL. # PAGE #
Tharp, Cyrus William Stear, Myrtle Esther 8 496

Wife: Myrtle Esther Stear

Born: 23 Jul 1900 in: Cozad, Dawson County, NE
Source: FamilySearch Ancestral File
Submission: AF95-109892,
Carole Ann Jensen Tucker
1728 6th Avenue
Scottsbluff, NE 69361-2542.
Died: 29 Mar 1927 in: Cozad, Dawson County, NE
Source: FamilySearch Ancestral File
Submission: AF95-109892,
Carole Ann Jensen Tucker
1728 6th Avenue
Scottsbluff, NE 69361-2542.
Burial: in: Fairview Cemetery, Cozad,
Dawson County, NB
Source: FamilySearch Ancestral File
Submission: AF95-109892,
Carole Ann Jensen Tucker
1728 6th Avenue
Scottsbluff, NE 69361-2542.
Father: Jacob L. Stear
Mother: Mable Rebecca Handley
Other Spouses:



Notes

<http://www.rootsweb.com/~nedawson/cemetery/fairview.html>

Fairview Cemetery

(Ringgold)

LOCATION: NE 1/4 S12 T9N R24W, Holmes Pct.

From Cozad: at Hwy 21 North & I-80 Interchange, 5 miles South. First burial 1878.

THARP, Myrtle E. 23 July 1900 29 Mar 1927

[http://www.findagrave.com/cgi-](http://www.findagrave.com/cgi-bin/fg.cgi?page=gr&GSln=tharp&GSbyrel=in&GSdyrel=in&GSst=31&GSctry=4&GSob=n&GRid=23226722&)

[bin/fg.cgi?page=gr&GSln=tharp&GSbyrel=in&GSdyrel=in&GSst=31&GSctry=4&GSob=n&GRid=23226722&](http://www.findagrave.com/cgi-bin/fg.cgi?page=gr&GSln=tharp&GSbyrel=in&GSdyrel=in&GSst=31&GSctry=4&GSob=n&GRid=23226722&)

NOTE: Obituary, paper and date unknown: "OBITUARY---Myrtle Esther Stear, daughter of Mr. and Mrs. J. L. Stear, was born July 23, 1900 at Cozad, Neb., and passed away March 29, 1927 at her home south of the city, following a lingering illness.

"The deceased lived continuously in this locality. She graduated from the Cozad High School after completing the rural school work near her home. She was united in marriage Sept. 15, 1921 to Cyrus William Tharp. To this union were born two daughters, Vivian Lucille and Lola Mae. For the past six months she has been a constant sufferer, but always in the best of spirits she hoped to be spared to rear her two girls.

"She was converted and united with the church in February, 1912, in which organization she has been a faithful follower of the Lord. Though her passing seems untimely, she has been able to exert a great influence for good and for strengthening of the Christian life of those who knew her. She had a constant and abiding trust in the Lord.

"She was always at Sunday School and the services of the church when ever her health would permit. Prayer and the reading of the Bible was often her request and was always welcomed by her, and the close of her earthly pilgrimage, which came Tuesday afternoon at 5:30 o'clock, was calm and quiet as her life had been.

"Those who knew her best testify that she was a faithful wife, a loving mother, daughter, sister and friend.

"She leaves to mourn her departure her husband, two daughters, father, mother and one sister, Mrs Lyal Troxel, all of this city, and also many other relatives and a host of friends.

"Funeral services were conducted Friday afternoon at the home and interment at Fairview Cemetery."

Burial::

Family Group Sheet

Fairview Cemetery
Dawson County
Nebraska, USA

CHILDREN

1	Name: Vivian Lucille Tharp		
	Born:	in:	
F	Married:	in:	
	Died:	in:	
	Burial:		
	Spouse:		



Notes

2	Name: Lola Mae Tharp		
	Born:	in:	
F	Married:	in:	
	Died:	in:	
	Burial:		
	Spouse:		



Notes

Prepared By:
Judy Kay ROATCAP-HASELWOOD
904 Warren Avenue
Gillette, WY 82716
kirby@vcn.com

Phone(s): (307) 682-7345

Family Group Sheet



Husband: Lyal Troxel

Born:	in:
Married:	in:
Died:	in:
Burial:	
Father:	
Mother:	

Other Spouses:



Notes

Marriage Notes

Check this out to see if it is the same Ethel V. Stear:

<http://www.rootsweb.com/~nedawson/marriage/maleK.html>

DAWSON COUNTY MARRIAGE INDEX - MALE

1873 - 1937

GROOM BRIDE VOL. # PAGE #

Troxel, Lyle E. Stear, Ethel V. 9 213

Wife: Ethel Viola Stear

Born: 28 Jul 1907	in: , Dawson County, NB
Source: FamilySearch Ancestral File	
Submission: AF95-109892,	
Carole Ann Jensen Tucker	
1728 6th Avenue	
Scottsbluff, NE 69361-2542.	
Died: 29 Nov 1938	in:
Source: FamilySearch Ancestral File	
Submission: AF95-109892,	
Carole Ann Jensen Tucker	
1728 6th Avenue	
Scottsbluff, NE 69361-2542.	
Burial:	in: Fairview Cemetery, Cozad, Dawson County, NB



Family Group Sheet

Source: Cemetery Record, Fairview
Cemetery, Cozad, Dawson
County, NB,
[http://www.findagrave.com/cgi-
bin/fg.cgi?page=gr&GSln=troxel&GSbyrel=in&GSdyrel=in&GSst=31&GSctry=4&GSob=n&GRid=21669234](http://www.findagrave.com/cgi-bin/fg.cgi?page=gr&GSln=troxel&GSbyrel=in&GSdyrel=in&GSst=31&GSctry=4&GSob=n&GRid=21669234).
Father: Jacob L. Stear
Mother: Mable Rebecca Handley
Other Spouses:

Notes

Prepared By:
Judy Kay ROATCAP-HASELWOOD
904 Warren Avenue
Gillette, WY 82716
kirby@vcn.com

Phone(s): (307) 682-7345

Family Group Sheet



Husband: James Stear

Born: Abt. 1871 in: , , PA
 Source: (1) Census - 1880 United States Census - Family History Library Film 1255135, Family History Library Film: 1255135 NA Film Number: T9-1135 Page Number 392A.
 (2) Dawson County, NEGenWeb Project - Fairview Cemetery
<http://www.rootsweb.com/~nedawson/cemetery/fairview.html>.
 Married: in:
 Died: 05 Jun 1899 in:
 Source: Dawson County, NEGenWeb Project - Fairview Cemetery
<http://www.rootsweb.com/~nedawson/cemetery/fairview.html>.
 Burial: in: Fairview Cemetery, Cozad, Dawson County, NB
 Source: Dawson County, NEGenWeb Project - Fairview Cemetery
<http://www.rootsweb.com/~nedawson/cemetery/fairview.html>.
 Father: John K. Stear
 Mother: Mary J. ?
 Other Spouses:



Notes

Marriage Notes

Family Group Sheet

Wife:	
Born:	in:
Died:	in:
Burial:	in:
Father:	
Mother:	
Other Spouses:	



Prepared By:
Judy Kay ROATCAP-HASELWOOD
904 Warren Avenue
Gillette, WY 82716
kirby@vcn.com

Phone(s): (307) 682-7345

Family Group Sheet



Husband: Harry Mead DeVinny

Born: 03 Dec 1863

in: Lexington, Dawson County,
NE

Source: (1) Headstone Cedar Cemetery,
Montrose County, CO.
(2) FamilySearch International
Genealogical Index, Ezekial J.
DeVinny.

Married: 11 Apr 1891

in: , Dawson County, NE

Source: (1) Headstone Cedar Cemetery,
Montrose County, CO.
(2) Dawson County Marriage
Index, Volume 2, Page 474
<http://www.usgennet.org/usa/ne/county/dawson1/marriage/maleD.html>.

Died: 11 Apr 1945

in:

Source: (1) Headstone Cedar Cemetery,
Montrose County, CO.
(2) FamilySearch International
Genealogical Index, Ezekial J.
DeVinny.

Burial:

in: Cedar Cemetery, Montrose
County, CO

Source: Headstone Cedar Cemetery,
Montrose County, CO.

Father: Ezekial Jewel DeVinny

Mother: Frances Elizabeth Buterbaugh

Other Spouses:



Notes

Marriage Notes

Family Group Sheet

Wife: Lydia Jane Stear

Born: 22 Jan 1874 in: , , PA
 Source: (1) Headstone Cedar Cemetery,
 Montrose County, CO.
 (2) Census - 1880 United
 States Census - Family History
 Library Film 1255135, Family
 History Library Film: 1255135
 NA Film Number: T9-1135
 Page Number 392A.
 Died: 22 Jan 1961 in:
 Source: Headstone Cedar Cemetery,
 Montrose County, CO.
 Burial: in: Cedar Cemetery, Montrose
 County, CO
 Source: Headstone Cedar Cemetery,
 Montrose County, CO.
 Father: John K. Stear
 Mother: Mary J. ?
 Other Spouses:

**Notes****CHILDREN**

1	Name: John Joel DeVinny, Sr. Born: 23 Aug 1895 in: Kearney, Buffalo County, NE Source: (1) FamilySearch International Genealogical Index, http://www.familysearch.org/Eng/Search/IGI/family_group_record.asp?familyid=282224685 . (2) Headstone Grand View Cemetery, Montrose County, CO, John J. DeVinny. (3) Census - 1930, http://www.footnote.com/search.php?category=nebraska&nav=4279514978&id=60505077&query%5B0%5D=devinny . (4) 1917 Draft Birth Registrations, Montrose, CO, http://files.usgwarchives.net/co/montrose/military/ww1/drafta.txt . Died: 15 Jul 1969 in: Source: (1) FamilySearch International Genealogical Index, http://www.familysearch.org/Eng/Search/IGI/family_group_record.asp?familyid=282224685 . (2) Headstone Grand View Cemetery, Montrose County, CO, John J. DeVinny. Burial: in: Grand View Cemetery, Montrose County, CO Source: Headstone Grand View Cemetery, Montrose County, CO, John J. DeVinny. Married: in: Spouse: Stella ?
---	---

M



Family Group Sheet

Notes

2	F	Name: Avis Dorothy DeVinny Born: 05 Aug 1899 in: Kearney, Buffalo County, NE Source: FamilySearch International Genealogical Index, http://www.familysearch.org/Eng/Search/frameset_search.asp?PAGE=search_all1.asp&clear_form=true . Died: 25 May 1986 in: Source: FamilySearch International Genealogical Index, http://www.familysearch.org/Eng/Search/frameset_search.asp?PAGE=search_all1.asp&clear_form=true . Burial: Married: 01 Jan 1918 in: Montrose, Montrose County, CO Source: FamilySearch International Genealogical Index, http://www.familysearch.org/Eng/Search/frameset_search.asp?PAGE=search_all1.asp&clear_form=true . Spouse: William David Cairns


Notes

3	F	Name: Verna Viola DeVinny Born: 07 Mar 1902 in: Montrose, Montrose County, CO Source: (1) FamilySearch International Genealogical Index, http://www.familysearch.org/Eng/Search/IGI/family_group_record.asp?familyid=282224685 . (2) Social Security Application, Verna Viola DeVinny Roatcap. (3) Headstone Cedar Cemetery, Montrose County, CO, Verna V. & Roy A.D. ROATCAP. Died: 25 Mar 1985 in: Montrose, Montrose County, CO Source: Headstone Cedar Cemetery, Montrose County, CO, Verna V. & Roy A.D. ROATCAP. Burial: 1985 in: Cedar Cemetery, Montrose County, CO Source: Headstone Cedar Cemetery, Montrose County, CO. Married: Bef. 1930 in: Spouse: Russell McClanahan Married: 08 Aug 1931 in: Montrose, Montrose County, CO Spouse: Roy Alexander Daniel Roatcap Married: 14 Jun 1958 in: Olathe, Montrose County, CO Source: "Newspaper Obituary," C.P. Meyer. Spouse: Chester P. Meyer


Notes

Census - US Federal 1930, Pct 17, Oak Grove, Montrose, Colorado Sheet 2a
 Verna (b: 1902) and Billie (b: 1921) McClannahan are living with Liddy (b: 1874) and HM (b: 1866) Devinny.


Family Group Sheet

4	Name: Hazel Arta DeVinny Born: 03 Feb 1904 in: Ouray, Ouray County, CO Source: FamilySearch International Genealogical Index, http://www.familysearch.org/Eng/Search/IGI/family_group_record.asp?familyid=282224685 There is a discrepancy between this record and U.S. Social Security Death Index. Died: Jan 1987 in: Source: Social Security Death Index - FamilySearch U.S., Hazel Schiesswohl. Burial: Married: Spouse: Ray Henry Schiesswohl	
---	---	---

Notes

5	Name: Pearl Lenore DeVinny Born: 10 Jun 1906 in: Ohio, Gunnison County, CO Source: FamilySearch International Genealogical Index, http://www.familysearch.org/Eng/Search/IGI/family_group_record.asp?familyid=282224685 Died: 10 Jun 1964 in: Source: FamilySearch International Genealogical Index, http://www.familysearch.org/Eng/Search/IGI/family_group_record.asp?familyid=282224685 Burial: Married: Spouse: Edwin Garrison, Sr	
---	---	--

Notes

6	Name: Lee Ralph DeVinny Born: 10 Sep 1910 in: Source: (1) Headstone Grand View Cemetery, Montrose County, CO, Lee Ralph DeVinny. (2) Social Security Death Index - FamilySearch U.S., Lee DeVinny. Died: 16 Aug 1979 in: Source: (1) Headstone Grand View Cemetery, Montrose County, CO, Lee Ralph DeVinny. (2) Social Security Death Index - FamilySearch U.S., Lee DeVinny. Burial: in: Grand View Cemetery, Montrose County, CO Source: Headstone Grand View Cemetery, Montrose County, CO, Lee Ralph DeVinny. Married: in: Spouse: Hazel ?	
---	--	---

Prepared by

Judy Kay ROATCAP HASELWOOD

Phone(s): (307) 682-7345

904 Warren Avenue
 Gillette, WY 82716
 kirby@vcn.com

Family Group Sheet



Husband: John Kinnan, Jr.

Born: 22 Dec 1868

in:

Source: (1) Lewis Townsend e-mail 5

June 2000, "Electronic."

(2) Dawson County,

NEGenWeb Project - Fairview
Cemetery

<http://www.rootsweb.com/~nedawson/cemetery/fairview.html>.

(3) Find a Grave Memorial

Website,

<http://www.findagrave.com/cgi>

-

[bin/fg.cgi?page=gr&GSln=kin](http://www.findagrave.com/cgi-bin/fg.cgi?page=gr&GSln=kin)

[nan&GSfn=john&GSbyrel=in](http://www.findagrave.com/cgi-bin/fg.cgi?page=gr&GSln=kin)

[&GSdyrel=in&GSctry=4&GS](http://www.findagrave.com/cgi-bin/fg.cgi?page=gr&GSln=kin)

[ob=n&GRid=21668917&](http://www.findagrave.com/cgi-bin/fg.cgi?page=gr&GSln=kin).

Married:

in:

Died: 10 Apr 1953

in: , , NE

Source: (1) Lewis Townsend e-mail 5

June 2000, "Electronic."

(2) Dawson County,

NEGenWeb Project - Fairview
Cemetery

<http://www.rootsweb.com/~nedawson/cemetery/fairview.html>.

(3) Find a Grave Memorial

Website,

<http://www.findagrave.com/cgi>

-

[bin/fg.cgi?page=gr&GSln=kin](http://www.findagrave.com/cgi-bin/fg.cgi?page=gr&GSln=kin)

[nan&GSfn=john&GSbyrel=in](http://www.findagrave.com/cgi-bin/fg.cgi?page=gr&GSln=kin)

[&GSdyrel=in&GSctry=4&GS](http://www.findagrave.com/cgi-bin/fg.cgi?page=gr&GSln=kin)

[ob=n&GRid=21668917&](http://www.findagrave.com/cgi-bin/fg.cgi?page=gr&GSln=kin).

Burial:

in: Fairview Cemetery, Cozad,
Dawson County, NB



Family Group Sheet

Source: (1) Dawson County,
NEGenWeb Project - Fairview
Cemetery
<http://www.rootsweb.com/~nedawson/cemetery/fairview.html>.
(2) Find a Grave Memorial
Website,
<http://www.findagrave.com/cgi-bin/fg.cgi?page=gr&GSln=kinnan&GSfn=john&GSbyrel=in&GSdyrel=in&GSctry=4&GSob=n&GRid=21668917&>.

Father: Peter Kinnan
Mother: Mary Elizabeth Ross
Other Spouses:

Notes

<http://www.rootsweb.com/~nedawson/cemetery/fairview.html>

Fairview Cemetery
(Ringgold)

LOCATION: NE 1/4 S12 T9N R24W, Holmes Pct.

From Cozad: at Hwy 21 North & I-80 Interchange, 5 miles South. First burial 1878.

KINNAN, John 12/22/1868 4/10/1953

Marriage Notes

Wife: Floretta M. Stear

Born: 12 Feb 1876
Source: (1) Lewis Townsend e-mail 5
June 2000, "Electronic."
(2) Census - 1880 United
States Census - Family History
Library Film 1255135, Family
History Library Film: 1255135
NA Film Number: T9-1135
Page Number 392A.
(3) Dawson County,
NEGenWeb Project - Fairview
Cemetery
<http://www.rootsweb.com/~nedawson/cemetery/fairview.html>.
Died: 28 Mar 1958
Source: Dawson County, NEGenWeb
Project - Fairview Cemetery
<http://www.rootsweb.com/~nedawson/cemetery/fairview.html>.
Burial:

in: , , PA

in: , , NE

in: Fairview Cemetery, Cozad,
Dawson County, NB



Family Group Sheet

Source: (1) Dawson County,
NEGenWeb Project - Fairview
Cemetery
<http://www.rootsweb.com/~nedawson/cemetery/fairview.html>.
(2) Find a Grave Memorial
Website,
<http://www.findagrave.com/cgi-bin/fg.cgi?page=gr&GSln=kinnan&GSfn=floretta&GSbyrel=in&GSdyrel=in&GSentry=4&GSob=n&GRid=21668918&>.

Father: John K. Stear

Mother: Mary J. ?

Other Spouses:

Notes

<http://www.rootsweb.com/~nedawson/cemetery/fairview.html>

Fairview Cemetery


(Ringgold)

LOCATION: NE 1/4 S12 T9N R24W, Holmes Pct.

From Cozad: at Hwy 21 North & I-80 Interchange, 5 miles South. First burial 1878.

KINNAN, Floretta M. 2/12/1876 3/28/1958

CHILDREN

1	<p>Name: Ora M. Kinnan Born: 10 Sep 1898 in: Source: (1) Dawson County, NEGenWeb Project - Fairview Cemetery http://www.rootsweb.com/~nedawson/cemetery/fairview.html. (2) Find a Grave Memorial Website, http://www.findagrave.com/cgi-bin/fg.cgi?page=gr&GSln=kinnan&GSfn=floretta&GSbyrel=in&GSdyrel=in&GSentry=4&GSob=n&GRid=21668916&. Married: in: Died: 24 Feb 1965 in: Source: (1) Dawson County, NEGenWeb Project - Fairview Cemetery http://www.rootsweb.com/~nedawson/cemetery/fairview.html. (2) Find a Grave Memorial Website, http://www.findagrave.com/cgi-bin/fg.cgi?page=gr&GSln=kinnan&GSfn=floretta&GSbyrel=in&GSdyrel=in&GSentry=4&GSob=n&GRid=21668916&. Burial: in: Fairview Cemetery, Cozad, Dawson County, NB Source: (1) Dawson County, NEGenWeb Project - Fairview Cemetery http://www.rootsweb.com/~nedawson/cemetery/fairview.html. (2) Find a Grave Memorial Website, http://www.findagrave.com/cgi-bin/fg.cgi?page=gr&GSln=kinnan&GSfn=floretta&GSbyrel=in&GSdyrel=in&GSentry=4&GSob=n&GRid=21668916&. Spouse:</p>
F	

Family Group Sheet

Notes

<http://www.rootsweb.com/~nedawson/cemetery/fairview.html>

Fairview Cemetery

(Ringgold)

LOCATION: NE 1/4 S12 T9N R24W, Holmes Pct.

From Cozad: at Hwy 21 North & I-80 Interchange, 5 miles South. First burial 1878.

KINNAN, Ora M. 9/10/1898 2/24/1965

2	<p>Name: Ruth Kinnan</p>
	<p>Born: 01 Aug 1900 in:</p>
	<p>Source: (1) Dawson County, NEGenWeb</p>
	<p>Project - Fairview Cemetery</p>
	<p>http://www.rootsweb.com/~nedawson/cemetery/fairview.html.</p>
	<p>(2) Find a Grave Memorial Website,</p>
	<p>http://www.findagrave.com/cgi-bin/fg.cgi?page=gr&GSln=kinnan&GScid=100631&GRid=21668919&.</p>
	<p>Married: in:</p>
	<p>Died: 02 Mar 1909 in: , , NE</p>
	<p>Source: (1) Dawson County, NEGenWeb</p>
	<p>Project - Fairview Cemetery</p>
	<p>http://www.rootsweb.com/~nedawson/cemetery/fairview.html.</p>
	<p>(2) Find a Grave Memorial Website,</p>
	<p>http://www.findagrave.com/cgi-bin/fg.cgi?page=gr&GSln=kinnan&GScid=100631&GRid=21668919&.</p>
	<p>Burial: in: Fairview Cemetery, Cozad, Dawson</p>
	<p>County, NE</p>
	<p>Source: (1) Dawson County, NEGenWeb</p>
	<p>Project - Fairview Cemetery</p>
	<p>http://www.rootsweb.com/~nedawson/cemetery/fairview.html.</p>
	<p>(2) Find a Grave Memorial Website,</p>
	<p>http://www.findagrave.com/cgi-bin/fg.cgi?page=gr&GSln=kinnan&GScid=100631&GRid=21668919&.</p>
	<p>Spouse:</p>



Notes

<http://www.rootsweb.com/~nedawson/cemetery/fairview.html>

Fairview Cemetery

(Ringgold)

LOCATION: NE 1/4 S12 T9N R24W, Holmes Pct.

From Cozad: at Hwy 21 North & I-80 Interchange, 5 miles South. First burial 1878.

KINNAN, Ruth 8/ 1/1900 3/ 2/1909

Family Group Sheet

3	Name: Paul A. Kinnan	
	Born: 30 Jan 1904	in:
M	Source: (1) Dawson County, NEGenWeb Project - Fairview Cemetery http://www.rootsweb.com/~nedawson/cemetery/fairview.html . (2) Lewis Townsend e-mail 5 June 2000, "Electronic." (3) Find a Grave Memorial Website, http://www.findagrave.com/cgi-bin/fg.cgi?page=gr&GSln=kinnan&GScid=100631&GRid=21668923& .	
	Died: 16 Apr 1993	in:
	Source: (1) Dawson County, NEGenWeb Project - Fairview Cemetery http://www.rootsweb.com/~nedawson/cemetery/fairview.html . (2) Find a Grave Memorial Website, http://www.findagrave.com/cgi-bin/fg.cgi?page=gr&GSln=kinnan&GScid=100631&GRid=21668923& .	
	Burial:	in: Fairview Cemetery, Cozad, Dawson County, NB
	Source: (1) Dawson County, NEGenWeb Project - Fairview Cemetery http://www.rootsweb.com/~nedawson/cemetery/fairview.html . (2) Find a Grave Memorial Website, http://www.findagrave.com/cgi-bin/fg.cgi?page=gr&GSln=kinnan&GScid=100631&GRid=21668923& .	
	Married: 1928	in: , Dawson County, NB
	Source: http://www.rootsweb.com/~nedawson/marriage/maleK.html .	
	Spouse: Beulah Evadne Tharp	

Notes

<http://www.rootsweb.com/~nedawson/cemetery/fairview.html>

Fairview Cemetery
(Ringgold)

LOCATION: NE 1/4 S12 T9N R24W, Holmes Pct.

From Cozad: at Hwy 21 North & I-80 Interchange, 5 miles South. First burial 1878.

KINNAN, Paul A. 1/30/1904 4/16/1993

4	Name: Earl J. Kinnan	
	Born: 07 Apr 1910	in:
M	Source: (1) Dawson County, NEGenWeb Project - Fairview Cemetery http://www.rootsweb.com/~nedawson/cemetery/fairview.html . (2) Find a Grave Memorial Website, http://www.findagrave.com/cgi-bin/fg.cgi?page=gr&GSln=kinnan&GScid=100631&GRid=21668908& .	
	Died: 12 Dec 1990	in:



Family Group Sheet

4	Source: (1) Dawson County, NEGenWeb Project - Fairview Cemetery http://www.rootsweb.com/~nedawson/cemetery/fairview.html . (2) Find a Grave Memorial Website, http://www.findagrave.com/cgi-bin/fg.cgi?page=gr&GSln=kinnan&GScid=100631&GRid=21668908& .	
	Burial:	in: Fairview Cemetery, Cozad, Dawson County, NB
M	Source: (1) Dawson County, NEGenWeb Project - Fairview Cemetery http://www.rootsweb.com/~nedawson/cemetery/fairview.html . (2) Find a Grave Memorial Website, http://www.findagrave.com/cgi-bin/fg.cgi?page=gr&GSln=kinnan&GScid=100631&GRid=21668908& .	
	Married:	in:
	Spouse: Cora ?	

Notes

<http://www.rootsweb.com/~nedawson/cemetery/fairview.html>

Fairview Cemetery

(Ringgold)

LOCATION: NE 1/4 S12 T9N R24W, Holmes Pct.

From Cozad: at Hwy 21 North & I-80 Interchange, 5 miles South. First burial 1878.

KINNAN, Earl J. 7 Apr 1910 12 Dec 1990

Prepared By:

Judy Kay ROATCAP-HASELWOOD

904 Warren Avenue

Gillette, WY 82716

kirby@vcn.com

Phone(s): (307) 682-7345

Family Group Sheet



Husband: Earl J. Kinnan

Born: 07 Apr 1910
 Source: (1) Dawson County,
 NEGenWeb Project - Fairview
 Cemetery
<http://www.rootsweb.com/~nedawson/cemetery/fairview.html>.
 (2) Find a Grave Memorial
 Website,
[http://www.findagrave.com/cgi-](http://www.findagrave.com/cgi-bin/fg.cgi?page=gr&GSln=kinnan&GScid=100631&GRid=21668908&)
[bin/fg.cgi?page=gr&GSln=kinnan&GScid=100631&GRid=21668908&](http://www.findagrave.com/cgi-bin/fg.cgi?page=gr&GSln=kinnan&GScid=100631&GRid=21668908&).

in:

Married:
 Died: 12 Dec 1990
 Source: (1) Dawson County,
 NEGenWeb Project - Fairview
 Cemetery
<http://www.rootsweb.com/~nedawson/cemetery/fairview.html>.
 (2) Find a Grave Memorial
 Website,
[http://www.findagrave.com/cgi-](http://www.findagrave.com/cgi-bin/fg.cgi?page=gr&GSln=kinnan&GScid=100631&GRid=21668908&)
[bin/fg.cgi?page=gr&GSln=kinnan&GScid=100631&GRid=21668908&](http://www.findagrave.com/cgi-bin/fg.cgi?page=gr&GSln=kinnan&GScid=100631&GRid=21668908&).

in:

in:



Burial:

in: Fairview Cemetery, Cozad,
 Dawson County, NB

Family Group Sheet

Source: (1) Dawson County,
NEGenWeb Project - Fairview
Cemetery
<http://www.rootsweb.com/~nedawson/cemetery/fairview.html>.
(2) Find a Grave Memorial
Website,
<http://www.findagrave.com/cgi-bin/fg.cgi?page=gr&GSln=kinnan&GScid=100631&GRid=21668908&>.
Father: John Kinnan, Jr.
Mother: Floretta M. Stear
Other Spouses:

Notes

<http://www.rootsweb.com/~nedawson/cemetery/fairview.html>

Fairview Cemetery

(Ringgold)

LOCATION: NE 1/4 S12 T9N R24W, Holmes Pct.

From Cozad: at Hwy 21 North & I-80 Interchange, 5 miles South. First burial 1878.

KINNAN, Earl J. 7 Apr 1910 12 Dec 1990

Marriage Notes

Wife: Cora ?

Born: 23 Aug 1912

in:

Source: (1) Dawson County,
NEGenWeb Project - Fairview
Cemetery
<http://www.rootsweb.com/~nedawson/cemetery/fairview.html>.
(2) Find a Grave Memorial
Website,
<http://www.findagrave.com/cgi-bin/fg.cgi?page=gr&GSln=kinnan&GScid=100631&GRid=21668933&>.
Died: 27 Jul 2001

in:

Source: (1) Dawson County,
NEGenWeb Project - Fairview
Cemetery
<http://www.rootsweb.com/~nedawson/cemetery/fairview.html>.
(2) Find a Grave Memorial
Website,
<http://www.findagrave.com/cgi-bin/fg.cgi?page=gr&GSln=kinnan&GScid=100631&GRid=21668933&>.

Burial:

in: Fairview Cemetery, Cozad,
Dawson County, NB



Family Group Sheet

Source: (1) Dawson County,
NEGenWeb Project - Fairview
Cemetery
<http://www.rootsweb.com/~nedawson/cemetery/fairview.html>.
(2) Find a Grave Memorial
Website,
<http://www.findagrave.com/cgi-bin/fg.cgi?page=gr&GSln=kinnan&GScid=100631&GRid=21668933&>.

Father:

Mother:

Other Spouses:

Notes

<http://www.rootsweb.com/~nedawson/cemetery/fairview.html>

Fairview Cemetery

(Ringgold)

LOCATION: NE 1/4 S12 T9N R24W, Holmes Pct.

From Cozad: at Hwy 21 North & I-80 Interchange, 5 miles South. First burial 1878.

KINNAN, Cora 23 Aug 1912 27 July 2001 m/o Dale Kinnan

CHILDREN

1 M	Name: Dale Kinnan	
	Born:	in:
	Married:	in:
	Died:	in:
	Burial:	
	Spouse:	



Notes

Prepared By:
Judy Kay ROATCAP-HASELWOOD
904 Warren Avenue
Gillette, WY 82716
kirby@vcn.com

Phone(s): (307) 682-7345

Family Group Sheet



Husband: John Birt Stear

Born: 18 Jan 1879
 Source: (1) Census - 1880 United States Census - Family History Library Film 1255135, Family History Library Film: 1255135 NA Film Number: T9-1135 Page Number 392A.
 (2) Social Security Death Index - FamilySearch U.S., John STEAR.
 (3) Census - 1900 U.S. Census Cozad Village, Dawson, NE, <http://www.usgennet.org/usa/ne/county/dawson/ed89-pg120a.txt>
 This source gives date of birth as June 1880.

in: , , PA

Married:

Source: (1) <http://www.rootsweb.com/~nedawson/marriage/maleK.html>.
 (2) Dawson County Marriage Index, <http://www.usgennet.org/usa/ne/county/dawson1/marriage/maleS.html#SS>.

in: , Dawson County, NE



Died: 11 Oct 1967
 Source: Social Security Death Index - FamilySearch U.S., John STEAR.

in: , , NE

Burial:

in: Mitchell Valley Cemetery,
 Scotts Bluff County, NE

Source: Rootsweb.com, <http://www.rootsweb.com/~nescotts/cemeteries/mitchellvalley.html>.

Father: John K. Stear

Mother: Mary J. ?

Other Spouses:

Family Group Sheet

Notes

Marriage Notes

<http://www.rootsweb.com/~nedawson/marriage/maleK.html>

DAWSON COUNTY MARRIAGE INDEX - MALE
1873 - 1937

GROOM BRIDE VOL. # PAGE #
STEAR, John B. HANDLEY, Lizzie 5 4

Wife: Elizabeth M. Handley

Born: 16 Apr 1884
Source: Headstone Mitchel Valley
Cemetery, Scotts Bluff County,
NB,
[http://www.findagrave.com/cgi-](http://www.findagrave.com/cgi-bin/fg.cgi?page=gr&GSln=stear&GSbyrel=in&GSdyrel=in&GSst=31&GSctry=4&GSob=n&GRid=21669434&)
[bin/fg.cgi?page=gr&GSln=stear&GSbyrel=in&GSdyrel=in&GSst=31&GSctry=4&GSob=n&GRid=21669434&](http://www.findagrave.com/cgi-bin/fg.cgi?page=gr&GSln=stear&GSbyrel=in&GSdyrel=in&GSst=31&GSctry=4&GSob=n&GRid=21669434&)

Died: 01 Jun 1958

Burial:

Source: Rootsweb.com,
<http://www.rootsweb.com/~nescotts/cemeteries/mitchellvalley.html>.

Father: John M. Handley

Mother: Auderiah Ellen Anderson

Other Spouses:

in:

in:

in: Mitchell Valley Cemetery,
Scotts Bluff County, NB



Notes

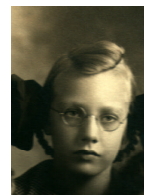
CHILDREN

1 M	Name: Jacob Stear	
	Born:	in:
	Married:	in:
	Died:	in:
	Burial:	
	Spouse:	



Notes

2 F	Name: Allie Laretta Stear	
	Born:	in:
	Married:	in:
	Died:	in:
	Burial:	
	Spouse:	



Notes

Prepared By:
Judy Kay ROATCAP-HASELWOOD
904 Warren Avenue
Gillette, WY 82716
kirby@vcn.com

Phone(s): (307) 682-7345

Family Group Sheet



Husband: John A. S. White

Born: Abt. 1880
 Source: Census - 1910,
<http://persi.heritagequestonline.com.ez.lib.wy.us/hqoweb/library/do/census/results/image?surname=white&givenname=john&series=13&state=30&hitcount=44&p=1&urn=urn%3Aproquest%3AUS%3Bcensus%3B5598853%3B21930768%3B13%3B30&searchtype=1&offset=17>.

in: , , PA

Married: 21 May 1905
 Source: Idaho Marriage Records,
 Volume 3, Page 224 Marriage
 ID # 87130
<http://abish.byui.edu/specialCollections/westernStates/westernStatesRecordDetail.cfm?recordID=87130>.

in: Pocatello, Bannock County, ID

Died:
 Burial:
 Father:
 Mother:

in:

Other Spouses:

Notes

Marriage Notes

Wife: Verna L. Stear

Born: Aug 1882

in: , , PA



Family Group Sheet

Source: Census - 1900,
<http://persi.heritagequestonline.com.ez.lib.wy.us/hqoweb/library/do/census/results/image?surname=stear&givenname=john&series=12&hitcount=8&p=1&urn=urn%3Aproquest%3AUS%3Bcensus%3B17146996%3B132142635%3B12%3B30&searchtype=1&offset=5>.

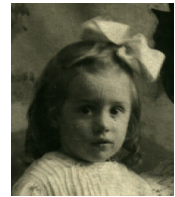
Died: in:
 Burial:
 Father: John K. Stear
 Mother: Mary J. ?
 Other Spouses:



Notes

CHILDREN

1	Name: Fern White		
	Born:	in:	
F	Married:	in:	
	Died:	in:	
	Burial:		
	Spouse:		



Notes

2	Name: Virginia White		
	Born:	in:	
F	Married:	in:	
	Died:	in:	
	Burial:		
	Spouse:		



Notes

3	Name: Mary G. White		
	Born: Abt. 1906	in: , , ID	
	Source: Census - 1910, http://persi.heritagequestonline.com.ez.lib.wy.us/hqoweb/library/do/census/results/image?surname=white&givenname=john&series=13&state=30&hitcount=44&p=1&urn=urn%3Aproquest%3AUS%3Bcensus%3B5598853%3B21930768%3B13%3B30&searchtype=1&offset=17 .		
F	Married:	in:	
	Died:	in:	
	Burial:		
	Spouse:		



Notes

Family Group Sheet

4	Name: Florence V. White Born: Abt. 1908 Source: Census - 1910, http://persi.heritagequestonline.com.ez.lib.wy.us/hqoweb/library/do/census/results/image?surname=white&givenname=john&series=13&state=30&hitcount=44&p=1&urn=urn%3Aproquest%3AUS%3Bcensus%3B5598853%3B21930768%3B13%3B30&searchtype=1&offset=17 . Married: Died: Burial: Spouse:	in: , , ID
F		



Notes

Is this Virginia???

5	Name: Ward White Born: Aug 1909 Source: Census - 1910, http://persi.heritagequestonline.com.ez.lib.wy.us/hqoweb/library/do/census/results/image?surname=white&givenname=john&series=13&state=30&hitcount=44&p=1&urn=urn%3Aproquest%3AUS%3Bcensus%3B5598853%3B21930768%3B13%3B30&searchtype=1&offset=17 . Married: Died: Burial: Spouse:	in: , , NE
M		



Notes

Prepared By:
 Judy Kay ROATCAP-HASELWOOD
 904 Warren Avenue
 Gillette, WY 82716
 kirby@vcn.com

Phone(s): (307) 682-7345

Family Group Sheet



Husband:

Born: in:
 Married: in:
 Died: in:
 Burial: in:
 Father:
 Mother:

Other Spouses:

Wife: Eleana A. Stear

Source: Census - 1900 U.S. Census Cozad Village, Dawson, NE,
<http://www.usgennet.org/usa/ne/county/dawson/ed89-pg120a.txt>.
 Born: Aug 1882 in: , , PA
 Source: Census - 1900 U.S. Census Cozad Village, Dawson, NE,
<http://www.usgennet.org/usa/ne/county/dawson/ed89-pg120a.txt>.
 Died: in:
 Burial:
 Father: John K. Stear
 Mother: Mary J. ?
 Other Spouses:

Notes

Prepared By:
 Judy Kay ROATCAP-HASELWOOD
 904 Warren Avenue
 Gillette, WY 82716
 kirby@vcn.com

Phone(s): (307) 682-7345

Family Group Sheet



Nebraska about 1907
Rear (left to right): Alfred Clark Stiver, Mary Elizabeth Stear Stiver, Lydia Clarissa Stiver,
Luther Ray Stiver
Front: John Stiver, Nettie Stiver, Henry Ward Stiver
Baby in Front: Helen Catherine Stiver

Husband: Martin Franklin Stiver

Born: 15 May 1861 in: , , PA
Source: Find a Grave Memorial Website,
<http://www.findagrave.com/cgi-bin/fg.cgi?page=gr&GSsr=81&GSmpid=46856204&GRid=21669440&>.
Died: 26 Jun 1915 in: , Scotts Bluff County, NE
Source: Find a Grave Memorial Website,
<http://www.findagrave.com/cgi-bin/fg.cgi?page=gr&GSsr=81&GSmpid=46856204&GRid=21669440&>.
Burial: in: Mitchell Valley Cemetery,
Mitchell, Scotts Bluff County,
NE
Source: Find a Grave Memorial Website,
<http://www.findagrave.com/cgi-bin/fg.cgi?page=gr&GSsr=81&GSmpid=46856204&GRid=21669440&>.
Father: Abraham Stiver, Sr.
Mother: Catharine Winebark

Notes

Marriage Notes

Family Group Sheet

Wife: Mary Elizabeth Stear

Born: 30 Apr 1866
 Source: Find a Grave Memorial
 Website,
[http://www.findagrave.com/cgi-](http://www.findagrave.com/cgi-bin/fg.cgi?page=gr&GSsr=81&GSmpid=46856204&GRid=21669441&)
[bin/fg.cgi?page=gr&GSsr=81&GSmpid=46856204&GRid=21669441&.](http://www.findagrave.com/cgi-bin/fg.cgi?page=gr&GSsr=81&GSmpid=46856204&GRid=21669441&)

Died: 29 May 1938
 Source: Find a Grave Memorial
 Website,
[http://www.findagrave.com/cgi-](http://www.findagrave.com/cgi-bin/fg.cgi?page=gr&GSsr=81&GSmpid=46856204&GRid=21669441&)
[bin/fg.cgi?page=gr&GSsr=81&GSmpid=46856204&GRid=21669441&.](http://www.findagrave.com/cgi-bin/fg.cgi?page=gr&GSsr=81&GSmpid=46856204&GRid=21669441&)

Burial: in: Mitchell Valley Cemetery,
 Mitchell, Scotts Bluff County,
 NE



Source: Find a Grave Memorial
 Website,
[http://www.findagrave.com/cgi-](http://www.findagrave.com/cgi-bin/fg.cgi?page=gr&GSsr=81&GSmpid=46856204&GRid=21669441&)
[bin/fg.cgi?page=gr&GSsr=81&GSmpid=46856204&GRid=21669441&.](http://www.findagrave.com/cgi-bin/fg.cgi?page=gr&GSsr=81&GSmpid=46856204&GRid=21669441&)

Father: John K. Stear
 Mother: Mary J. Johnson

Notes

CHILDREN

1 Name: May Stiver
 Born: 21 Apr 1888
 Source: (1) Picture in Possession of Judy
 Kay ROATCAP-HASELWOOD,
 "fig.," This is Aunt Lizzie's Oldest
 child May.
 (2) Find a Grave Memorial Website,
[http://www.findagrave.com/cgi-](http://www.findagrave.com/cgi-bin/fg.cgi?page=gr&GSln=long&GSby=1888&GSbyrel=in&GSdyrel=in&GSob=n&GSsr=241&GRid=21661593&)
[bin/fg.cgi?page=gr&GSln=long&GSby=1888&GSbyrel=in&GSdyrel=in&GSob=n&GSsr=241&GRid=21661593&.](http://www.findagrave.com/cgi-bin/fg.cgi?page=gr&GSln=long&GSby=1888&GSbyrel=in&GSdyrel=in&GSob=n&GSsr=241&GRid=21661593&)

Died: 08 Mar 1914 in: , , NB
 Source: (1) Picture in Possession of Judy
 Kay ROATCAP-HASELWOOD,
 "fig.," This is Aunt Lizzie's Oldest
 child May.
 (2) Find a Grave Memorial Website,
[http://www.findagrave.com/cgi-](http://www.findagrave.com/cgi-bin/fg.cgi?page=gr&GSln=long&GSby=1888&GSbyrel=in&GSdyrel=in&GSob=n&GSsr=241&GRid=21661593&)
[bin/fg.cgi?page=gr&GSln=long&GSby=1888&GSbyrel=in&GSdyrel=in&GSob=n&GSsr=241&GRid=21661593&.](http://www.findagrave.com/cgi-bin/fg.cgi?page=gr&GSln=long&GSby=1888&GSbyrel=in&GSdyrel=in&GSob=n&GSsr=241&GRid=21661593&)

Burial: in: Mitchell Valley Cemetery, Mitchell,
 Scotts Bluff County, NE



Family Group Sheet

1	Source: Find a Grave Memorial Website, http://www.findagrave.com/cgi-bin/fg.cgi?page=gr&GSln=long&GSby=1888&GSbyrel=in&GSdyrel=in&GSob=n&GSsr=241&GRid=21661593&
F	Spouse: Lemuel H. Long

Notes

2	Name: Lydia Clarissa Stiver
F	

Notes

3	Name: Alfred Clarke Stiver Born: 29 Apr 1890 in: Scottsbluff, ? County, NE Source: Find a Grave Memorial Website, http://www.findagrave.com/cgi-bin/fg.cgi?page=gr&GSln=stiver&GScid=100981&GRid=21669437& Died: 22 May 1973 in: , Scottsbluff County, NE Source: Find a Grave Memorial Website, http://www.findagrave.com/cgi-bin/fg.cgi?page=gr&GSln=stiver&GScid=100981&GRid=21669437& Burial: in: Mitchell Valley Cemetery, Mitchell, Scotts Bluff County, NE Source: Find a Grave Memorial Website, http://www.findagrave.com/cgi-bin/fg.cgi?page=gr&GSln=stiver&GScid=100981&GRid=21669437& Spouse: Grace Nix
M	

Notes

4	Name: Luther Ray Stiver Born: 04 Feb 1895 in: , , NE Source: (1) Census - 1920, http://persi.heritagequestonline.com.ez.lib.wy.us/hqoweb/library/do/census/results/image?surname=stiver&series=14&state=30&hitcount=5&p=1&urn=urn%3Aproquest%3AUS%3Bcensus%3B14903485%3B109130941%3B14%3B30&searchtype=1&offset=3 (2) Find a Grave Memorial Website, http://www.findagrave.com/cgi-bin/fg.cgi?page=gr&GSln=stiver&GSfn=luther&GSbyrel=in&GSdyrel=in&GSob=n&GRid=21669448& Died: 26 Jul 1953 in: , , NE Source: Find a Grave Memorial Website, http://www.findagrave.com/cgi-bin/fg.cgi?page=gr&GSln=stiver&GSfn=luther&GSbyrel=in&GSdyrel=in&GSob=n&GRid=21669448& Burial: in: Mitchell Valley Cemetery, Mitchell, Scotts Bluff County, NE
M	

Family Group Sheet

4	Source: Find a Grave Memorial Website, http://www.findagrave.com/cgi-bin/fg.cgi?page=gr&GSln=stiver&GSfn=luther&GSbyrel=in&GSdyrel=in&GSob=n&GRid=21669448& .
M	Spouse: Neva L. ?

Notes

5	Name: John N. Stiver Born: 16 Feb 1898 Source: Find a Grave Memorial Website, http://www.findagrave.com/cgi-bin/fg.cgi?page=gr&GSsr=81&GSmpid=46856204&GRid=21669446& . Died: 28 Jun 1974
M	Source: Find a Grave Memorial Website, http://www.findagrave.com/cgi-bin/fg.cgi?page=gr&GSsr=81&GSmpid=46856204&GRid=21669446& . Burial: in: Mitchell Valley Cemetery, Mitchell, Scotts Bluff County, NE Source: Find a Grave Memorial Website, http://www.findagrave.com/cgi-bin/fg.cgi?page=gr&GSsr=81&GSmpid=46856204&GRid=21669446& .

Notes

6	Name: Henry Ward Stiver Born: 11 Feb 1901 in: , , NE Source: (1) Census - 1920, http://persi.heritagequestonline.com.ez.lib.wy.us/hqoweb/library/do/census/results/image?surname=stiver&series=14&state=30&hitcount=5&p=1&urn=urn%3Aproquest%3AUS%3Bcensus%3B14903278%3B109128035%3B14%3B30&searchtype=1&offset=4 . (2) Find a Grave Memorial Website, http://www.findagrave.com/cgi-bin/fg.cgi?page=pi&GSln=stiver&GScid=100981&GRid=25053102&PIgrid=25053102&PIcid=100981&PIpi=9578392& .
M	Died: 16 Jul 1991 Source: Find a Grave Memorial Website, http://www.findagrave.com/cgi-bin/fg.cgi?page=pi&GSln=stiver&GScid=100981&GRid=25053102&PIgrid=25053102&PIcid=100981&PIpi=9578392& . Burial: in: Mitchell Valley Cemetery, Mitchell, Scotts Bluff County, NE Source: Find a Grave Memorial Website, http://www.findagrave.com/cgi-bin/fg.cgi?page=gr&GSln=stiver&GScid=100981&GRid=21669445& . Married: 1920 in: , , NE

Family Group Sheet

6	Source: Family Search,
M	http://www.familysearch.org/Eng/Search/frameset_search.asp .
	Spouse: Nellie Mae Adams

Notes

7	Name: Helen Catherine Stiver	
	Born: 12 Jun 1904	in: Mitchell, Scotts Bluff County, NE
	Source: Census - 1920,	
	http://persi.heritagequestonline.com.ez.lib.wy.us/hqoweb/library/do/census/results/image?surname=stiver&series=14&state=30&hitcount=5&p=1&urn=urn%3Aproquest%3AUS%3Bcensus%3B14903278%3B109128035%3B14%3B30&searchtype=1&offset=4	
F		
	Died: 15 May 1977	in: Scottsbluff, Scotts Bluff County, NE
	Married: 25 Feb 1926	in: Bridgeport, Morrill County, NE
	Spouse: Thomas Calvin Russell	

Notes

8	Name: Mary E. Stiver	
	Born: Abt. 1909	in: , , NE
	Source: Census - 1920,	
	s/image?surname=stiver&series=14&state=30&hitcount=5&p=1&urn=urn%3Aproquest%3AUS%3Bcensus%3B14903278%3B109128035%3B14%3B30&searchtype=1&offset=4	
F		

Notes

Prepared By:
 Judy Kay ROATCAP-HASELWOOD
 904 Warren Avenue
 Gillette, WY 82716
 kirby@vcn.com

Phone(s): (307) 682-7345

Family Group Sheet

Husband:	Martin Franklin Stiver
aka:	Frank Stiver
Born:	15 May 1861
in:	, , PA
Source:	Find a Grave Memorial Website, http://www.findagrave.com/cgi-bin/fg.cgi?page=gr&GSsr=81&GSmpid=46856204&GRid=21669440& .
Died:	26 Jun 1915
in:	, Scotts Bluff County, NE
Source:	Find a Grave Memorial Website, http://www.findagrave.com/cgi-bin/fg.cgi?page=gr&GSsr=81&GSmpid=46856204&GRid=21669440& .
Relationship with Father:	Abraham Stiver, Sr. - Natural
Relationship with Mother:	Catharine Winebark - Natural
Wife:	Mary Elizabeth Stear
Born:	30 Apr 1866
Source:	Find a Grave Memorial Website, http://www.findagrave.com/cgi-bin/fg.cgi?page=gr&GSsr=81&GSmpid=46856204&GRid=21669441& .
Died:	29 May 1938
Source:	Find a Grave Memorial Website, http://www.findagrave.com/cgi-bin/fg.cgi?page=gr&GSsr=81&GSmpid=46856204&GRid=21669441& .
Relationship with Father:	John K. Stear - Natural
Relationship with Mother:	Mary J. Johnson - Natural
Child:	May Stiver
aka:	Nettie May Stiver
Born:	21 Apr 1888
Source:	(1) Picture in Possession of Judy Kay ROATCAP-HASELWOOD, "fig.," This is Aunt Lizzie's Oldest child May. (2) Find a Grave Memorial Website, http://www.findagrave.com/cgi-bin/fg.cgi?page=gr&GSln=long&GSby=1888&GSbyrel=in&GSdyrel=in&GSob=n&GSsr=241&GRid=21661593& .
Died:	08 Mar 1914
in:	, , NB
Source:	(1) Picture in Possession of Judy Kay ROATCAP-HASELWOOD, "fig.," This is Aunt Lizzie's Oldest child May. (2) Find a Grave Memorial Website, http://www.findagrave.com/cgi-bin/fg.cgi?page=gr&GSln=long&GSby=1888&GSbyrel=in&GSdyrel=in&GSob=n&GSsr=241&GRid=21661593& .
Relationship with Father:	Martin Franklin Stiver - Natural
Relationship with Mother:	Mary Elizabeth Stear - Natural
Child:	Lydia Clarissa Stiver
Relationship with Father:	Martin Franklin Stiver - Natural
Relationship with Mother:	Mary Elizabeth Stear - Natural
Child:	Alfred Clarke Stiver
Born:	29 Apr 1890
in:	Scottsbluff, ? County, NE
Source:	Find a Grave Memorial Website, http://www.findagrave.com/cgi-bin/fg.cgi?page=gr&GSln=stiver&GScid=100981&GRid=21669437& .
Died:	22 May 1973
in:	, Scottsbluff County, NE
Source:	Find a Grave Memorial Website, http://www.findagrave.com/cgi-bin/fg.cgi?page=gr&GSln=stiver&GScid=100981&GRid=21669437& .
Relationship with Father:	Martin Franklin Stiver - Natural
Relationship with Mother:	Mary Elizabeth Stear - Natural

Family Group Sheet

Child:	Luther Ray Stiver
aka:	Luther Raymond Stiver
Born:	04 Feb 1895
in:	, , NE
Source:	(1) Census - 1920, http://persi.heritagequestonline.com.ez.lib.wy.us/hqoweb/library/do/census/results/image?surname=stiver&series=14&state=30&hitcount=5&p=1&urn=urn%3Aproquest%3AUS%3Bcensus%3B14903485%3B109130941%3B14%3B30&searchtype=1&offset=3 . (2) Find a Grave Memorial Website, http://www.findagrave.com/cgi-bin/fg.cgi?page=gr&GSln=stiver&GSfn=luther&GSbyrel=in&GSdyrel=in&GSob=n&GRid=21669448& .
Died:	26 Jul 1953
in:	, , NE
Source:	Find a Grave Memorial Website, http://www.findagrave.com/cgi-bin/fg.cgi?page=gr&GSln=stiver&GSfn=luther&GSbyrel=in&GSdyrel=in&GSob=n&GRid=21669448& .
Relationship with Father:	Martin Franklin Stiver - Natural
Relationship with Mother:	Mary Elizabeth Stear - Natural
Child:	John N. Stiver
Born:	16 Feb 1898
Source:	Find a Grave Memorial Website, http://www.findagrave.com/cgi-bin/fg.cgi?page=gr&GSsr=81&GSmpid=46856204&GRid=21669446& .
Died:	28 Jun 1974
Source:	Find a Grave Memorial Website, http://www.findagrave.com/cgi-bin/fg.cgi?page=gr&GSsr=81&GSmpid=46856204&GRid=21669446& .
Relationship with Father:	Martin Franklin Stiver - Natural
Relationship with Mother:	Mary Elizabeth Stear - Natural
Child:	Henry Ward Stiver
Born:	11 Feb 1901
in:	, , NE
Source:	(1) Census - 1920, http://persi.heritagequestonline.com.ez.lib.wy.us/hqoweb/library/do/census/results/image?surname=stiver&series=14&state=30&hitcount=5&p=1&urn=urn%3Aproquest%3AUS%3Bcensus%3B14903278%3B109128035%3B14%3B30&searchtype=1&offset=4 . (2) Find a Grave Memorial Website, http://www.findagrave.com/cgi-bin/fg.cgi?page=pis&GSln=stiver&GScid=100981&GRid=25053102&PIgrid=25053102&PIcid=100981&PIpi=9578392& .
Died:	16 Jul 1991
Source:	Find a Grave Memorial Website, http://www.findagrave.com/cgi-bin/fg.cgi?page=pis&GSln=stiver&GScid=100981&GRid=25053102&PIgrid=25053102&PIcid=100981&PIpi=9578392& .
Relationship with Father:	Martin Franklin Stiver - Natural
Relationship with Mother:	Mary Elizabeth Stear - Natural
Child:	Helen Catherine Stiver
Born:	12 Jun 1904
in:	Mitchell, Scotts Bluff County, NE
Source:	Census - 1920, http://persi.heritagequestonline.com.ez.lib.wy.us/hqoweb/library/do/census/results/image?surname=stiver&series=14&state=30&hitcount=5&p=1&urn=urn%3Aproquest%3AUS%3Bcensus%3B14903278%3B109128035%3B14%3B30&searchtype=1&offset=4 .
Died:	15 May 1977
in:	Scottsbluff, Scotts Bluff County, NE
Relationship with Father:	Martin Franklin Stiver - Natural

Family Group Sheet

Relationship with Mother:	Mary Elizabeth Stear - Natural
Child:	Mary E.Stiver
Born:	Abt. 1909
in:	, , NE
Source:	Census - 1920, s/image?surname=stiver&series=14&state=30&hitcount=5&p=1&urn=urn%3Aproquest%3AUS%3Bcensus%3B14903278%3B109128035%3B14%3B30&searchtype=1&offset=4.
Relationship with Father:	Martin Franklin Stiver - Natural
Relationship with Mother:	Mary Elizabeth Stear - Natural

Family Group Sheet



Husband: Lemuel H. Long

Born: 23 Dec 1871	in: , , IN
Source: Find a Grave Memorial Website, http://www.findagrave.com/cgi-bin/fg.cgi?page=gr&GSln=long&GSby=1888&GSbyrel=in&GSdyrel=in&GSob=n&GSsr=241&GRid=21661593&	
Married:	in:
Died: 23 Dec 1917	in:
Source: Find a Grave Memorial Website, http://www.findagrave.com/cgi-bin/fg.cgi?page=gr&GSln=long&GSby=1888&GSbyrel=in&GSdyrel=in&GSob=n&GSsr=241&GRid=21661593&	
Burial:	in: Mitchel Valley Cemetery, Mitchell, Scotts Bluff County, NE
Source: Find a Grave Memorial Website, http://www.findagrave.com/cgi-bin/fg.cgi?page=gr&GSln=long&GSby=1888&GSbyrel=in&GSdyrel=in&GSob=n&GSsr=241&GRid=21661593&	
Father:	
Mother:	
Other Spouses:	



Notes

Marriage Notes

Family Group Sheet

Wife: May Stiver

Born: 21 Apr 1888 in:

Source: (1) Picture in Possession of
Judy Kay ROATCAP-
HASSELWOOD, "fig.," This is
Aunt Lizzie's Oldest child
May.
(2) Find a Grave Memorial
Website,
[http://www.findagrave.com/cgi-](http://www.findagrave.com/cgi-bin/fg.cgi?page=gr&GSln=long&GSby=1888&GSbyrel=in&GSdyrel=in&GSob=n&GSsr=241&GRid=21661593&)

Died: 08 Mar 1914 in: , , NB

Source: (1) Picture in Possession of
Judy Kay ROATCAP-
HASSELWOOD, "fig.," This is
Aunt Lizzie's Oldest child May.
(2) Find a Grave Memorial
Website,
[http://www.findagrave.com/cgi-](http://www.findagrave.com/cgi-bin/fg.cgi?page=gr&GSln=long&GSby=1888&GSbyrel=in&GSdyrel=in&GSob=n&GSsr=241&GRid=21661593&)

Burial: in: Mitchell Valley Cemetery,
Mitchell, Scotts Bluff County,
NE

Source: Find a Grave Memorial
Website,
[http://www.findagrave.com/cgi-](http://www.findagrave.com/cgi-bin/fg.cgi?page=gr&GSln=long&GSby=1888&GSbyrel=in&GSdyrel=in&GSob=n&GSsr=241&GRid=21661593&)

Father: Martin Franklin Stiver

Mother: Mary Elizabeth Stear

Other Spouses:

**Notes****CHILDREN**

1 Name: Homer S. Long
Born: Abt. Apr 1910 in: , , WY
Source: Census - 1910,
<http://persi.heritagequestonline.com.ez.lib.wy.us/hqoweb/library/do/census/results/image?surname=long&givenname=lemuel&series=13&hitcount=14&p=1&urn=urn%3Aproquest%3AUS%3Bcensus%3B6673803%3B42379158%3B13%3B51&searchtype=1&offset=9>.

Married: in:

Prepared By: Died: in:

Judy Kay ROATCAP-HASELWOOD Phone(s): (307) 682-7345

904 Warren Avenue

Gillette, WY 82716

kirby@vcn.com



Family Group Sheet

Wife: Lydia Clarissa Stiver

Father: Martin Franklin Stiver

Mother: Mary Elizabeth Stear

Notes

Prepared By:
Judy Kay ROATCAP-HASELWOOD
904 Warren Avenue
Gillette, WY 82716
kirby@vcn.com

Phone(s): (307) 682-7345

Family Group Sheet

Wife:	Lydia Clarissa Stiver
Relationship with Father:	Martin Franklin Stiver - Natural
Relationship with Mother:	Mary Elizabeth Stear - Natural

Family Group Sheet

Husband: Alfred Clarke Stiver

Born: 29 Apr 1890 in: Scottsbluff, ? County, NE
 Source: Find a Grave Memorial Website,
<http://www.findagrave.com/cgi-bin/fg.cgi?page=gr&GSln=stiver&GScid=100981&GRid=21669437&>.
 Died: 22 May 1973 in: , Scottsbluff County, NE
 Source: Find a Grave Memorial Website,
<http://www.findagrave.com/cgi-bin/fg.cgi?page=gr&GSln=stiver&GScid=100981&GRid=21669437&>.
 Burial: in: Mitchell Valley Cemetery,
 Mitchell, Scotts Bluff County,
 NE
 Source: Find a Grave Memorial Website,
<http://www.findagrave.com/cgi-bin/fg.cgi?page=gr&GSln=stiver&GScid=100981&GRid=21669437&>.
 Father: Martin Franklin Stiver
 Mother: Mary Elizabeth Stear

Notes**Marriage Notes****Wife: Grace Nix**

Born: 1889
 Source: Find a Grave Memorial Website,
<http://www.findagrave.com/cgi-bin/fg.cgi?page=gr&GSln=stiver&GScid=100981&GRid=21669442&>.
 Died: 1918
 Source: Find a Grave Memorial Website,
<http://www.findagrave.com/cgi-bin/fg.cgi?page=gr&GSln=stiver&GScid=100981&GRid=21669442&>.
 Burial: in: Mitchell Valley Cemetery,
 Mitchell, Scotts Bluff County,
 NE

Family Group Sheet

Source: Find a Grave Memorial

Website,

<http://www.findagrave.com/cgi>

-

bin/fg.cgi?page=gr&GSln=stiver&GScid=100981&GRid=21669442&.

Notes

CHILDREN

1	Name: Vera L. Stiver Born: Abt. 1913 Source: Census - 1920,	in: , , NE
F	http://persi.heritagequestonline.com.ez.lib.wy.us/hqoweb/library/do/census/results/image?surname=stiver&series=14&state=30&hitcount=5&p=1&urn=urn%3Aproquest%3AUS%3Bcensus%3B14903278%3B109128035%3B14%3B30&searchtype=1&offset=4 .	

Notes

2	Name: Alfred R. Stiver Born: Abt. 1915 Source: Census - 1920,	in: , , NE
M	http://persi.heritagequestonline.com.ez.lib.wy.us/hqoweb/library/do/census/results/image?surname=stiver&series=14&state=30&hitcount=5&p=1&urn=urn%3Aproquest%3AUS%3Bcensus%3B14903278%3B109128035%3B14%3B30&searchtype=1&offset=4 .	

Notes

Prepared By:
Judy Kay ROATCAP-HASELWOOD
904 Warren Avenue
Gillette, WY 82716
kirby@vcn.com

Phone(s): (307) 682-7345

Family Group Sheet

Husband:	Alfred Clarke Stiver
Born:	29 Apr 1890
in:	Scottsbluff, ? County, NE
Source:	Find a Grave Memorial Website, http://www.findagrave.com/cgi-bin/fg.cgi?page=gr&GSln=stiver&GScid=100981&GRid=21669437& .
Died:	22 May 1973
in:	, Scottsbluff County, NE
Source:	Find a Grave Memorial Website, http://www.findagrave.com/cgi-bin/fg.cgi?page=gr&GSln=stiver&GScid=100981&GRid=21669437& .
Relationship with Father:	Martin Franklin Stiver - Natural
Relationship with Mother:	Mary Elizabeth Stear - Natural
Wife:	Grace Nix
Born:	1889
Source:	Find a Grave Memorial Website, http://www.findagrave.com/cgi-bin/fg.cgi?page=gr&GSln=stiver&GScid=100981&GRid=21669442& .
Died:	1918
Source:	Find a Grave Memorial Website, http://www.findagrave.com/cgi-bin/fg.cgi?page=gr&GSln=stiver&GScid=100981&GRid=21669442& .
Child:	Vera L. Stiver
Born:	Abt. 1913
in:	, , NE
Source:	Census - 1920, http://persi.heritagequestonline.com.ez.lib.wy.us/hqoweb/library/do/census/results/image?surname=stiver&series=14&state=30&hitcount=5&p=1&urn=urn%3Aproquest%3AUS%3Bcensus%3B14903278%3B109128035%3B14%3B30&searchtype=1&offset=4 .
Relationship with Father:	Alfred Clarke Stiver - Natural
Relationship with Mother:	Grace Nix - Natural
Child:	Alfred R. Stiver
Born:	Abt. 1915
in:	, , NE
Source:	Census - 1920, http://persi.heritagequestonline.com.ez.lib.wy.us/hqoweb/library/do/census/results/image?surname=stiver&series=14&state=30&hitcount=5&p=1&urn=urn%3Aproquest%3AUS%3Bcensus%3B14903278%3B109128035%3B14%3B30&searchtype=1&offset=4 .
Relationship with Father:	Alfred Clarke Stiver - Natural
Relationship with Mother:	Grace Nix - Natural

Family Group Sheet

Husband: Luther Ray Stiver

Born: 04 Feb 1895 in: , , NE

Source: (1) Census - 1920,
<http://persi.heritagequestonline.com.ez.lib.wy.us/hqoweb/library/do/census/results/image?surname=stiver&series=14&state=30&hitcount=5&p=1&urn=urn%3Aproquest%3AUS%3Bcensus%3B14903485%3B109130941%3B14%3B30&searchtype=1&offset=3>.

(2) Find a Grave Memorial Website,
<http://www.findagrave.com/cgi-bin/fg.cgi?page=gr&GSln=stiver&GSfn=luther&GSbyrel=in&GSdyrel=in&GSob=n&GRid=21669448&>.

Died: 26 Jul 1953 in: , , NE

Source: Find a Grave Memorial Website,
<http://www.findagrave.com/cgi-bin/fg.cgi?page=gr&GSln=stiver&GSfn=luther&GSbyrel=in&GSdyrel=in&GSob=n&GRid=21669448&>.

Burial: in: Mitchell Valley Cemetery,
 Mitchell, Scotts Bluff County,
 NE

Source: Find a Grave Memorial Website,
<http://www.findagrave.com/cgi-bin/fg.cgi?page=gr&GSln=stiver&GSfn=luther&GSbyrel=in&GSdyrel=in&GSob=n&GRid=21669448&>.

Father: Martin Franklin Stiver

Mother: Mary Elizabeth Stear

Notes**Marriage Notes**

Wife: Neva L. ?

Born: 1900

Family Group Sheet

Source: (1) Census - 1920,
<http://persi.heritagequestonline.com.ez.lib.wy.us/hqoweb/library/do/census/results/image?surname=stiver&series=14&state=30&hitcount=5&p=1&urn=urn%3Aproquest%3AUS%3Bcensus%3B14903485%3B109130941%3B14%3B30&searchtype=1&offset=3>.

(2) Find a Grave Memorial Website,
<http://www.findagrave.com/cgi-bin/fg.cgi?page=gr&GSln=stiver&GSfn=neva&GSbyrel=in&GSdyrel=in&GSob=n&GRid=24877846&>.

Died: 1998

Source: Find a Grave Memorial Website,
<http://www.findagrave.com/cgi-bin/fg.cgi?page=gr&GSln=stiver&GSfn=neva&GSbyrel=in&GSdyrel=in&GSob=n&GRid=24877846&>.

Burial:

in: Mitchell Valley Cemetery,
 Mitchell, Scotts Bluff County,
 NE

Source: Find a Grave Memorial Website,
<http://www.findagrave.com/cgi-bin/fg.cgi?page=gr&GSln=stiver&GSfn=neva&GSbyrel=in&GSdyrel=in&GSob=n&GRid=24877846&>.

Notes

CHILDREN

1	Name: Leeucille Stiver Born: Abt. 1919
F	Source: Census - 1920, http://persi.heritagequestonline.com.ez.lib.wy.us/hqoweb/library/do/census/results/image?surname=stiver&series=14&state=30&hitcount=5&p=1&urn=urn%3Aproquest%3AUS%3Bcensus%3B14903485%3B109130941%3B14%3B30&searchtype=1&offset=3 .

Notes

Prepared By:
 Judy Kay ROATCAP-HASELWOOD
 904 Warren Avenue
 Gillette, WY 82716
 kirby@vcn.com

Phone(s): (307) 682-7345

Family Group Sheet

Husband: Luther Ray Stiver	
aka:	Luther Raymond Stiver
Born:	04 Feb 1895
in:	, , NE
Source:	(1) Census - 1920, http://persi.heritagequestonline.com.ez.lib.wy.us/hqoweb/library/do/census/results/image?surname=stiver&series=14&state=30&hitcount=5&p=1&urn=urn%3Aproquest%3AUS%3Bcensus%3B14903485%3B109130941%3B14%3B30&searchtype=1&offset=3 . (2) Find a Grave Memorial Website, http://www.findagrave.com/cgi-bin/fg.cgi?page=gr&GSln=stiver&GSfn=luther&GSbyrel=in&GSdyrel=in&GSob=n&GRid=21669448& .
Died:	26 Jul 1953
in:	, , NE
Source:	Find a Grave Memorial Website, http://www.findagrave.com/cgi-bin/fg.cgi?page=gr&GSln=stiver&GSfn=luther&GSbyrel=in&GSdyrel=in&GSob=n&GRid=21669448& .
Relationship with Father:	Martin Franklin Stiver - Natural
Relationship with Mother:	Mary Elizabeth Stear - Natural
Wife: Neva L. ?	
Born:	1900
Source:	(1) Census - 1920, http://persi.heritagequestonline.com.ez.lib.wy.us/hqoweb/library/do/census/results/image?surname=stiver&series=14&state=30&hitcount=5&p=1&urn=urn%3Aproquest%3AUS%3Bcensus%3B14903485%3B109130941%3B14%3B30&searchtype=1&offset=3 . (2) Find a Grave Memorial Website, http://www.findagrave.com/cgi-bin/fg.cgi?page=gr&GSln=stiver&GSfn=neva&GSbyrel=in&GSdyrel=in&GSob=n&GRid=24877846& .
Died:	1998
Source:	Find a Grave Memorial Website, http://www.findagrave.com/cgi-bin/fg.cgi?page=gr&GSln=stiver&GSfn=neva&GSbyrel=in&GSdyrel=in&GSob=n&GRid=24877846& .
Child: Leeucille Stiver	
Born:	Abt. 1919
Source:	Census - 1920, http://persi.heritagequestonline.com.ez.lib.wy.us/hqoweb/library/do/census/results/image?surname=stiver&series=14&state=30&hitcount=5&p=1&urn=urn%3Aproquest%3AUS%3Bcensus%3B14903485%3B109130941%3B14%3B30&searchtype=1&offset=3 .
Relationship with Father:	Luther Ray Stiver - Natural
Relationship with Mother:	Neva L. ? - Natural

Family Group Sheet

Husband: John N. Stiver

Born: 16 Feb 1898
 Source: Find a Grave Memorial
 Website,
[http://www.findagrave.com/cgi-](http://www.findagrave.com/cgi-bin/fg.cgi?page=gr&GSsr=81&GSmpid=46856204&GRid=21669446&)
[bin/fg.cgi?page=gr&GSsr=81&GSmpid=46856204&GRid=21669446&.](http://www.findagrave.com/cgi-bin/fg.cgi?page=gr&GSsr=81&GSmpid=46856204&GRid=21669446&)

Died: 28 Jun 1974
 Source: Find a Grave Memorial
 Website,
[http://www.findagrave.com/cgi-](http://www.findagrave.com/cgi-bin/fg.cgi?page=gr&GSsr=81&GSmpid=46856204&GRid=21669446&)
[bin/fg.cgi?page=gr&GSsr=81&GSmpid=46856204&GRid=21669446&.](http://www.findagrave.com/cgi-bin/fg.cgi?page=gr&GSsr=81&GSmpid=46856204&GRid=21669446&)

Burial: in: Mitchell Valley Cemetery,
 Mitchell, Scotts Bluff County,
 NE

Source: Find a Grave Memorial
 Website,
[http://www.findagrave.com/cgi-](http://www.findagrave.com/cgi-bin/fg.cgi?page=gr&GSsr=81&GSmpid=46856204&GRid=21669446&)
[bin/fg.cgi?page=gr&GSsr=81&GSmpid=46856204&GRid=21669446&.](http://www.findagrave.com/cgi-bin/fg.cgi?page=gr&GSsr=81&GSmpid=46856204&GRid=21669446&)

Father: Martin Franklin Stiver

Mother: Mary Elizabeth Stear

Notes

Marriage Notes

Prepared By:
 Judy Kay ROATCAP-HASELWOOD
 904 Warren Avenue
 Gillette, WY 82716
kirby@vcn.com

Phone(s): (307) 682-7345

Family Group Sheet

Husband:	John N. Stiver
Born:	16 Feb 1898
Source:	Find a Grave Memorial Website, http://www.findagrave.com/cgi-bin/fg.cgi?page=gr&GSsr=81&GSmpid=46856204&GRid=21669446& .
Died:	28 Jun 1974
Source:	Find a Grave Memorial Website, http://www.findagrave.com/cgi-bin/fg.cgi?page=gr&GSsr=81&GSmpid=46856204&GRid=21669446& .
Relationship with Father:	Martin Franklin Stiver - Natural
Relationship with Mother:	Mary Elizabeth Stear - Natural

Family Group Sheet

Husband: Henry Ward Stiver

Born: 11 Feb 1901

in: , , NE

Source: (1) Census - 1920,
<http://persi.heritagequestonline.com.ez.lib.wy.us/hqoweb/library/do/census/results/image?surname=stiver&series=14&state=30&hitcount=5&p=1&urn=urn%3Aproquest%3AUS%3Bcensus%3B14903278%3B109128035%3B14%3B30&searchtype=1&offset=4>.
 (2) Find a Grave Memorial Website,
<http://www.findagrave.com/cgi-bin/fg.cgi?page=pis&GSln=stiver&GScid=100981&GRid=25053102&PIgrid=25053102&PId=100981&PIpi=9578392&>

Married: 1920

in: , , NE

Source: Faimily Search,
http://www.familysearch.org/Eng/Search/framest_search.asp.

Died: 16 Jul 1991

Source: Find a Grave Memorial Website,
<http://www.findagrave.com/cgi-bin/fg.cgi?page=pis&GSln=stiver&GScid=100981&GRid=25053102&PIgrid=25053102&PId=100981&PIpi=9578392&>

Burial:

in: Mitchell Valley Cemetery,
 Mitchell, Scotts Bluff County,
 NE

Source: Find a Grave Memorial Website,
<http://www.findagrave.com/cgi-bin/fg.cgi?page=gr&GSln=stiver&GScid=100981&GRid=21669445&>.

Father: Martin Franklin Stiver

Mother: Mary Elizabeth Stear

Notes**Marriage Notes****Wife: Nellie Mae Adams**

Born: 04 Oct 1902

Family Group Sheet

Source: Find a Grave Memorial Website,
http://www.findagrave.com/cgi-bin/fg.cgi?page=pi&GSln=stiver&GScid=100981&GRid=25053102&PIgrid=25053102&PIcrd=100981&PIpi=9578392&

Died: 22 Jul 1973

Source: Find a Grave Memorial Website,
http://www.findagrave.com/cgi-bin/fg.cgi?page=pi&GSln=stiver&GScid=100981&GRid=25053102&PIgrid=25053102&PIcrd=100981&PIpi=9578392&

Burial:

in: Mitchell Valley Cemetery,
Mitchell, Scotts Bluff County,
NE

Source: Find a Grave Memorial Website,
http://www.findagrave.com/cgi-bin/fg.cgi?page=gr&GSln=stiver&GScid=100981&GRid=21669445&

Notes

CHILDREN

1	Name: Allen Stiver Born: 26 Jun 1930 Source: Find a Grave Memorial Website, http://www.findagrave.com/cgi-bin/fg.cgi?page=gr&GSln=stiver&GScid=100981&GRid=21669438&
	Died: 10 Jul 1930 Source: Find a Grave Memorial Website, http://www.findagrave.com/cgi-bin/fg.cgi?page=gr&GSln=stiver&GScid=100981&GRid=21669438&
M	

Notes

2	Name: Henry Ward Stiver, Jr. Born: 09 Feb 1922 Source: Find a Grave Memorial Website, http://www.findagrave.com/cgi-bin/fg.cgi?page=gr&GSln=stiver&GScid=100981&GRid=24716688&
	Died: 12 Oct 1994 Source: Find a Grave Memorial Website, http://www.findagrave.com/cgi-bin/fg.cgi?page=gr&GSln=stiver&GScid=100981&GRid=24716688&
M	Burial: in: Mitchell Valley Cemetery, Mitchell, Scotts Bluff County, NE

Family Group Sheet

2	Source: Find a Grave Memorial Website, http://www.findagrave.com/cgi-bin/fg.cgi?page=gr&GSln=stiver&GScid=100981&GRid=24716688& .
M	Married: 18 Feb 1947 in: Harrisburg, , NE Source: Find a Grave Memorial Website, http://www.findagrave.com/cgi-bin/fg.cgi?page=gr&GSln=stiver&GScid=100981&GRid=27000028& . Spouse: Florence J. Lougee

Notes

3	Name: Frank Stiver
M	

Notes

4	Name: Dale Stiver
M	

Notes

Prepared By:
Judy Kay ROATCAP-HASELWOOD
904 Warren Avenue
Gillette, WY 82716
kirby@vcn.com

Phone(s): (307) 682-7345

Family Group Sheet

Husband:	Henry Ward Stiver
Born:	11 Feb 1901
in:	, , NE
Source:	(1) Census - 1920, http://persi.heritagequestonline.com.ez.lib.wy.us/hqoweb/library/do/census/results/image?surname=stiver&series=14&state=30&hitcount=5&p=1&urn=urn%3Aproquest%3AUS%3Bcensus%3B14903278%3B109128035%3B14%3B30&searchtype=1&offset=4 . (2) Find a Grave Memorial Website, http://www.findagrave.com/cgi-bin/fg.cgi?page=pis&GSln=stiver&GScid=100981&GRid=25053102&PIgrid=25053102&PIcid=100981&PIpi=9578392& .
Died:	16 Jul 1991
Source:	Find a Grave Memorial Website, http://www.findagrave.com/cgi-bin/fg.cgi?page=pis&GSln=stiver&GScid=100981&GRid=25053102&PIgrid=25053102&PIcid=100981&PIpi=9578392& .
Relationship with Father:	Martin Franklin Stiver - Natural
Relationship with Mother:	Mary Elizabeth Stear - Natural
Wife:	Nellie Mae Adams
Born:	04 Oct 1902
Source:	Find a Grave Memorial Website, http://www.findagrave.com/cgi-bin/fg.cgi?page=pis&GSln=stiver&GScid=100981&GRid=25053102&PIgrid=25053102&PIcid=100981&PIpi=9578392& .
Died:	22 Jul 1973
Source:	Find a Grave Memorial Website, http://www.findagrave.com/cgi-bin/fg.cgi?page=pis&GSln=stiver&GScid=100981&GRid=25053102&PIgrid=25053102&PIcid=100981&PIpi=9578392& .
Child:	Allen Stiver
Born:	26 Jun 1930
Source:	Find a Grave Memorial Website, http://www.findagrave.com/cgi-bin/fg.cgi?page=gr&GSln=stiver&GScid=100981&GRid=21669438& .
Died:	10 Jul 1930
Source:	Find a Grave Memorial Website, http://www.findagrave.com/cgi-bin/fg.cgi?page=gr&GSln=stiver&GScid=100981&GRid=21669438& .
Relationship with Father:	Henry Ward Stiver - Natural
Relationship with Mother:	Nellie Mae Adams - Natural
Child:	Henry Ward Stiver, Jr.
Born:	09 Feb 1922
Source:	Find a Grave Memorial Website, http://www.findagrave.com/cgi-bin/fg.cgi?page=gr&GSln=stiver&GScid=100981&GRid=24716688& .
Died:	12 Oct 1994
Source:	Find a Grave Memorial Website, http://www.findagrave.com/cgi-bin/fg.cgi?page=gr&GSln=stiver&GScid=100981&GRid=24716688& .
Relationship with Father:	Henry Ward Stiver - Natural
Relationship with Mother:	Nellie Mae Adams - Natural
Child:	Frank Stiver
Relationship with Father:	Henry Ward Stiver - Natural
Relationship with Mother:	Nellie Mae Adams - Natural
Child:	Dale Stiver
Relationship with Father:	Henry Ward Stiver - Natural
Relationship with Mother:	Nellie Mae Adams - Natural

Family Group Sheet

Husband: Henry Ward Stiver, Jr.

Born: 09 Feb 1922

Source: Find a Grave Memorial
 Website,
[http://www.findagrave.com/cgi-](http://www.findagrave.com/cgi-bin/fg.cgi?page=gr&GSln=stiver&GScid=100981&GRid=24716688&)
[bin/fg.cgi?page=gr&GSln=stiver&GScid=100981&GRid=24716688&](http://www.findagrave.com/cgi-bin/fg.cgi?page=gr&GSln=stiver&GScid=100981&GRid=24716688&).

Married: 18 Feb 1947

in: Harrisburg, , NE

Source: Find a Grave Memorial
 Website,
[http://www.findagrave.com/cgi-](http://www.findagrave.com/cgi-bin/fg.cgi?page=gr&GSln=stiver&GScid=100981&GRid=27000028&)
[bin/fg.cgi?page=gr&GSln=stiver&GScid=100981&GRid=27000028&](http://www.findagrave.com/cgi-bin/fg.cgi?page=gr&GSln=stiver&GScid=100981&GRid=27000028&).

Died: 12 Oct 1994

Source: Find a Grave Memorial
 Website,
[http://www.findagrave.com/cgi-](http://www.findagrave.com/cgi-bin/fg.cgi?page=gr&GSln=stiver&GScid=100981&GRid=24716688&)
[bin/fg.cgi?page=gr&GSln=stiver&GScid=100981&GRid=24716688&](http://www.findagrave.com/cgi-bin/fg.cgi?page=gr&GSln=stiver&GScid=100981&GRid=24716688&).

Burial:

in: Mitchell Valley Cemetery,
 Mitchell, Scotts Bluff County,
 NE

Source: Find a Grave Memorial
 Website,
[http://www.findagrave.com/cgi-](http://www.findagrave.com/cgi-bin/fg.cgi?page=gr&GSln=stiver&GScid=100981&GRid=24716688&)
[bin/fg.cgi?page=gr&GSln=stiver&GScid=100981&GRid=24716688&](http://www.findagrave.com/cgi-bin/fg.cgi?page=gr&GSln=stiver&GScid=100981&GRid=24716688&).

Father: Henry Ward Stiver
 Mother: Nellie Mae Adams

Notes**Marriage Notes****Wife: Florence J. Lougee**

Born: 15 Jun 1929

in: Scottsbluff, Scotts Bluff
 County, NE

Source: Find a Grave Memorial
 Website,
[http://www.findagrave.com/cgi-](http://www.findagrave.com/cgi-bin/fg.cgi?page=gr&GSln=stiver&GScid=100981&GRid=27000028&)
[bin/fg.cgi?page=gr&GSln=stiver&GScid=100981&GRid=27000028&](http://www.findagrave.com/cgi-bin/fg.cgi?page=gr&GSln=stiver&GScid=100981&GRid=27000028&).

Died: 13 May 2008

in: Mitchell, Scotts Bluff County,
 NE

Family Group Sheet

Source: Find a Grave Memorial

Website,

[http://www.findagrave.com/cgi-](http://www.findagrave.com/cgi-bin/fg.cgi?page=gr&GSln=stiver&GScid=100981&GRid=27000028&)

-

[bin/fg.cgi?page=gr&GSln=stiver&GScid=100981&GRid=27000028&](http://www.findagrave.com/cgi-bin/fg.cgi?page=gr&GSln=stiver&GScid=100981&GRid=27000028&).

Burial: 16 May 2008

in: Mitchell Valley Cemetery,
Mitchell, Scotts Bluff County,
NE

Source: Find a Grave Memorial

Website,

[http://www.findagrave.com/cgi-](http://www.findagrave.com/cgi-bin/fg.cgi?page=gr&GSln=stiver&GScid=100981&GRid=27000028&)

-

[bin/fg.cgi?page=gr&GSln=stiver&GScid=100981&GRid=27000028&](http://www.findagrave.com/cgi-bin/fg.cgi?page=gr&GSln=stiver&GScid=100981&GRid=27000028&).

Father: Kenith Lougee

Mother: Luella Smith

Notes

Find a Grave Website - [http://www.findagrave.com/cgi-](http://www.findagrave.com/cgi-bin/fg.cgi?page=gr&GSln=stiver&GScid=100981&GRid=27000028&)

[bin/fg.cgi?page=gr&GSln=stiver&GScid=100981&GRid=27000028&](http://www.findagrave.com/cgi-bin/fg.cgi?page=gr&GSln=stiver&GScid=100981&GRid=27000028&)

Florence J Lougee Stiver

[Suggest a correction]

Birth: Jun. 15, 1929

Scottsbluff

Scotts Bluff County

Nebraska, USA

Death: May 13, 2008

Mitchell

Scotts Bluff County

Nebraska, USA

MITCHELL - Florence J. Stiver, 78, of Mitchell, went to be with her beloved husband and her Lord, Tuesday, May 13, 2008, at her home.

Her Funeral will be at 10 a.m., Friday, May 16, at the Jones Mortuary, with Pastor Sheila Taylor officiating.

Interment will be in the Mitchell Valley Cemetery.

Memorials in her name have been established to the United Methodist Church at Mitchell, the Mitchell Senior Center or the Mitchell Volunteer Fire and Rescue Department. Friends may call at the Mortuary, Thursday, May 15 from 11 a.m. to 7 p.m. Condolences may be left for Florence's family at jonesmor@charterinternet.com.

Florence was born June 15, 1929, in Scottsbluff, the daughter of Kenith and Luella (Smith) Lougee. She was united in marriage to Henry W. Stiver, Jr., Feb. 18, 1947, in Harrisburg. To this union her son Kenneth and daughter Elaine were born and raised.

She was a member of the United Methodist Church at Mitchell and was an active member of the Mitchell Senior Citizen Center until her health failed. She enjoyed her family and getting out whenever she could. Florence will be sadly missed by all.

Survivors include her son, Kenneth Stiver, and daughter, Elaine Houser, both of Mitchell; grandchildren, Justin (Jenna) Stiver of Cozad, Daniel (Brenda) Houser of Mitchell, Brenda (Mike) Knaub of Gering; great-grandchildren, Aaron and Alexandra Stiver of Cozad, Phillip and Taylor Houser of Mitchell; step-grandchildren, Megan (Casey) Dahlgren, Miranda Knaub, Zach (Alyssa) Knaub, all of Gering; step-great great-grandchildren, Tyson and MaKenna Dahlgren and Adam Knaub all of Gering; sister-in-law, Linda Lorraine Stiver of Callaway; brothers-in-law, Frank (Peg) Stiver of Mitchell and Dale (Darlene) Stiver of Spring Valley, Calif., six nephews, a number of great nephews and nieces and great, great nephews and nieces.

She was preceded in death by her parents and husband, Henry.

Family Group Sheet

CHILDREN	
1 M	Name: Kenneth Stiver Spouse:
Notes	
2 F	Name: Elaine Stiver Spouse: ? Houser
Notes	

Prepared By:
Judy Kay ROATCAP-HASELWOOD
904 Warren Avenue
Gillette, WY 82716
kirby@vcn.com

Phone(s): (307) 682-7345

Family Group Sheet

Husband:	Henry Ward Stiver, Jr.
Born:	09 Feb 1922
Source:	Find a Grave Memorial Website, http://www.findagrave.com/cgi-bin/fg.cgi?page=gr&GSln=stiver&GScid=100981&GRid=24716688& .
Died:	12 Oct 1994
Source:	Find a Grave Memorial Website, http://www.findagrave.com/cgi-bin/fg.cgi?page=gr&GSln=stiver&GScid=100981&GRid=24716688& .
Relationship with Father:	Henry Ward Stiver - Natural
Relationship with Mother:	Nellie Mae Adams - Natural
Wife:	Florence J. Lougee
Born:	15 Jun 1929
in:	Scottsbluff, Scotts Bluff County, NE
Source:	Find a Grave Memorial Website, http://www.findagrave.com/cgi-bin/fg.cgi?page=gr&GSln=stiver&GScid=100981&GRid=27000028& .
Died:	13 May 2008
in:	Mitchell, Scotts Bluff County, NE
Source:	Find a Grave Memorial Website, http://www.findagrave.com/cgi-bin/fg.cgi?page=gr&GSln=stiver&GScid=100981&GRid=27000028& .
Relationship with Father:	Kenith Lougee - Natural
Relationship with Mother:	Luella Smith - Natural
Child:	Kenneth Stiver
Relationship with Father:	Henry Ward Stiver, Jr. - Natural
Relationship with Mother:	Florence J. Lougee - Natural
Child:	Elaine Stiver
Relationship with Father:	Henry Ward Stiver, Jr. - Natural
Relationship with Mother:	Florence J. Lougee - Natural

Family Group Sheet

Husband: ? Houser

Notes

Marriage Notes

Wife: Elaine Stiver

Father: Henry Ward Stiver, Jr.
Mother: Florence J. Lougee

Notes

CHILDREN

1 M	Name: Daniel Houser
--------	---------------------

Notes

Prepared By:
Judy Kay ROATCAP-HASELWOOD
904 Warren Avenue
Gillette, WY 82716
kirby@vcn.com

Phone(s): (307) 682-7345

Family Group Sheet

Husband:	? Houser
Wife:	Elaine Stiver
Relationship with Father:	Henry Ward Stiver, Jr. - Natural
Relationship with Mother:	Florence J. Lougee - Natural
Child:	Daniel Houser
Relationship with Father:	? Houser - Natural
Relationship with Mother:	Elaine Stiver - Natural

Family Group Sheet

Husband: Thomas Calvin Russell

Born: 26 Jan 1906

in: Mitchell, Scotts Bluff County,
NE

Source: Find a Grave Memorial
Website,
<http://www.findagrave.com/cgi-bin/fg.cgi?page=gr&GSln=russell&GSbyrel=in&GSdyrel=in&GSst=31&GSctry=4&GSob=n&GSsr=201&GRid=21669430&>.

Married: 25 Feb 1926

in: Bridgeport, Morrill County,
NE

Died: 14 Mar 1966

Source: Find a Grave Memorial
Website,
<http://www.findagrave.com/cgi-bin/fg.cgi?page=gr&GSln=russell&GSbyrel=in&GSdyrel=in&GSst=31&GSctry=4&GSob=n&GSsr=201&GRid=21669430&>.

Burial:

in: Mitchell Valley Cemetery,
Mitchell, Scotts Bluff County,
NE

Source: Find a Grave Memorial
Website,
<http://www.findagrave.com/cgi-bin/fg.cgi?page=gr&GSln=russell&GSbyrel=in&GSdyrel=in&GSst=31&GSctry=4&GSob=n&GSsr=201&GRid=21669430&>.

Notes**Marriage Notes****Wife: Helen Catherine Stiver**

Born: 12 Jun 1904

in: Mitchell, Scotts Bluff County,
NE

Source: Census - 1920,
<http://persi.heritagequestonline.com.ez.lib.wy.us/hqoweb/library/do/census/results/image?surname=stiver&series=14&state=30&hitcount=5&p=1&urn=urn%3Aproquest%3AUS%3Bcensus%3B14903278%3B109128035%3B14%3B30&searchtype=1&offset=4>.

Died: 15 May 1977

in: Scottsbluff, Scotts Bluff
County, NE

Father: Martin Franklin Stiver
Mother: Mary Elizabeth Stear

Notes

Family Group Sheet

CHILDREN

1	Name: 1 Russell
?	

Notes

2	Name: 2 Russell
?	

Notes

3	Name: 3 Russell
?	

Notes

4	Name: Billy Gene Russell	
	Born: 05 Jan 1933	in: Mitchell, Scotts Bluff County, NE
	Source: Find a Grave Memorial Website, http://www.findagrave.com/cgi-bin/fg.cgi?page=gr&GSln=russell&GScid=100981&GRid=21669416& .	
	Died: 30 Mar 1981	
M	Source: Find a Grave Memorial Website, http://www.findagrave.com/cgi-bin/fg.cgi?page=gr&GSln=russell&GScid=100981&GRid=21669416& .	
	Burial:	in: Mitchell Valley Cemetery, Mitchell, Scotts Bluff County, NE
	Source: Find a Grave Memorial Website, http://www.findagrave.com/cgi-bin/fg.cgi?page=gr&GSln=russell&GScid=100981&GRid=21669416& .	
	Spouse: Melba Jean Staab	

Notes

Family Group Sheet

Husband:	Thomas Calvin Russell
Born:	26 Jan 1906
in:	Mitchell, Scotts Bluff County, NE
Source:	Find a Grave Memorial Website, http://www.findagrave.com/cgi-bin/fg.cgi?page=gr&GSln=russell&GSbyrel=in&GSdyrel=in&GSst=31&GSctry=4&GSob=n&GSsr=201&GRid=21669430& .
Died:	14 Mar 1966
Source:	Find a Grave Memorial Website, http://www.findagrave.com/cgi-bin/fg.cgi?page=gr&GSln=russell&GSbyrel=in&GSdyrel=in&GSst=31&GSctry=4&GSob=n&GSsr=201&GRid=21669430& .
Wife:	Helen Catherine Stiver
Born:	12 Jun 1904
in:	Mitchell, Scotts Bluff County, NE
Source:	Census - 1920, http://persi.heritagequestonline.com.ez.lib.wy.us/hqoweb/library/do/census/results/image?surname=stiver&series=14&state=30&hitcount=5&p=1&urn=urn%3Aproquest%3AUS%3Bcensus%3B14903278%3B109128035%3B14%3B30&searchtype=1&offset=4 .
Died:	15 May 1977
in:	Scottsbluff, Scotts Bluff County, NE
Relationship with Father:	Martin Franklin Stiver - Natural
Relationship with Mother:	Mary Elizabeth Stear - Natural
Child:	1 Russell
Relationship with Father:	Thomas Calvin Russell - Natural
Relationship with Mother:	Helen Catherine Stiver - Natural
Child:	2 Russell
Relationship with Father:	Thomas Calvin Russell - Natural
Relationship with Mother:	Helen Catherine Stiver - Natural
Child:	3 Russell
Relationship with Father:	Thomas Calvin Russell - Natural
Relationship with Mother:	Helen Catherine Stiver - Natural
Child:	Billy Gene Russell
Born:	05 Jan 1933
in:	Mitchell, Scotts Bluff County, NE
Source:	Find a Grave Memorial Website, http://www.findagrave.com/cgi-bin/fg.cgi?page=gr&GSln=russell&GScid=100981&GRid=21669416& .
Died:	30 Mar 1981
Source:	Find a Grave Memorial Website, http://www.findagrave.com/cgi-bin/fg.cgi?page=gr&GSln=russell&GScid=100981&GRid=21669416& .
Relationship with Father:	Thomas Calvin Russell - Natural
Relationship with Mother:	Helen Catherine Stiver - Natural

Family Group Sheet

Wife: Mary E.Stiver

Born: Abt. 1909 in: , , NE
 Source: Census - 1920,
 s/image?surname=stiver&series=14&state=30&hitcount=5&p=1&urn
 =urn%3Aproquest%3AUS%3Bcensus%3B14903278%3B109128035
 %3B14%3B30&searchtype=1&offset=4.
 Father: Martin Franklin Stiver
 Mother: Mary Elizabeth Stear

Notes

Prepared By:
 Judy Kay ROATCAP-HASELWOOD
 904 Warren Avenue
 Gillette, WY 82716
 kirby@vcn.com

Phone(s): (307) 682-7345

Family Group Sheet

Wife: Mary E.Stiver	
Born:	Abt. 1909
in:	, , NE
Source:	Census - 1920, s/image?surname=stiver&series=14&state=30&hitcount=5&p=1&urn=urn%3Aproquest%3AUS%3Bcensus%3B14903278%3B109128035%3B14%3B30&searchtype=1&offset=4.
Relationship with Father:	Martin Franklin Stiver - Natural
Relationship with Mother:	Mary Elizabeth Stear - Natural

Index of Individuals

? -

Cora: 3, 4, 41-44
 Cynthia Katrina: 2, 4
 Dori: 2, 4
 Fern: 2, 4
 Frances V.: 2, 4, 16, 17
 Hazel: 3, 4, 34
 Kim: 3, 4
 Lib: 4
 Mary J.: 2, 4, 7, 8, 15, 19, 20, 29, 32, 37, 38, 45, 46, 48, 49, 51
 Neva L.: 3, 54, 55, 68-70
 Sandra: 2, 4
 Stella: 2, 4, 32, 33
 Virginia: 2, 4

Adams -

Nellie Mae: 3, 55, 56, 73, 74, 76, 77, 80

Anderson -

Addie (name: Auderiah Ellen Anderson): 21, 46
 Auderiah Ellen (aka: Addie Anderson): 21, 46

Bailey -

David: 3, 4

Buterbaugh -

Frances Elizabeth (aka: Elizabeth Butterbaugh): 31

Butterbaugh -

Elizabeth (name: Frances Elizabeth Buterbaugh): 31

Cairns -

Fern Lenore: 2, 4
 William David: 2, 4, 33

Cooper -

?: 3, 4
 ?: 3, 4
 Gary: 3, 4
 Jimmy: 3, 4

DeVinny -

Avis Dorothy: 2, 4, 33
 Donald: 2, 4
 Ezekial Jewel: 31
 Harry Mead: 2, 4, 11, 31, 32
 Hazel Arta: 2, 4, 34
 John Joel, Jr.: 2, 4
 John Joel, Sr.: 2, 4, 32, 33
 Lee Ralph: 3, 4, 34
 Louetta: 2, 4
 Pearl Lenore: 3, 4, 34
 Ralph: 3, 4
 Ralph: 2, 4
 Verna Viola: 2, 4, 33

E.Stiver -

Mary: 3, 56, 59, 86, 87

Garrison -

Alta Mae: 3, 4
 Edwin, Jr.: 3, 4
 Edwin, Sr.: 3, 4, 34
 Jack: 3, 4

Handley -

Elizabeth M. (aka: Lizzie Handley): 3, 4, 12, 45, 46
 John M.: 21, 46
 Lizzie (name: Elizabeth M. Handley): 3, 4, 12, 45, 46
 Mable Rebecca: 2, 4, 9, 10, 19-22, 25, 27, 28

Houser -

?: 3, 79, 81, 82

Daniel: 3, 81, 82

Hummer -

George: 2, 4

Johnson -

Mary J.: 53, 57

Kinnan -

Dale: 3, 4, 44
 Earl J.: 3, 4, 41-44
 John, Jr.: 3, 4, 11, 12, 36-38, 42, 43
 Ora M.: 3, 4, 38, 39
 Paul A.: 3, 4, 40
 Peter: 36, 37
 Ruth: 3, 4, 39, 40

Lambert -

Norma: 2, 4

Long -

Homer S.: 3, 62
 Lemuel H.: 3, 53, 54, 60, 61

Losh -

Rick: 2, 4

Lougee -

Florence J.: 3, 75, 77, 78, 80-82
 Kenith: 77, 78, 80

Magnusson -

?: 2, 4

McClanahan -

Bill (name: William Glenn McClanahan): 2, 4, 5
 Kathryn (aka: Kitty McClanahan): 2, 4
 Kitty (name: Kathryn McClanahan): 2, 4
 Mari: 2, 4
 Michael (aka: Mike McClanahan): 2, 5
 Mike (name: Michael McClanahan): 2, 5
 Patric: 2, 5
 Russell: 2, 5, 33
 William Glenn (aka: Bill McClanahan): 2, 4, 5

Meyer -

Chester P.: 2, 5, 33

Newinham -

Mary S.: 2, 5, 9, 15, 17

Nix -

Grace: 3, 54, 65-67

Roatcap -

Barbara June: 2, 5
 Roy Alexander Daniel: 2, 5, 33

Ross -

Mary Elizabeth: 36, 37

Rowling -

Devin: 2, 5

Russell -

1: 3, 84, 85
 2: 3, 84, 85
 3: 3, 84, 85
 Billy Gene: 3, 84, 85
 Thomas Calvin: 3, 56, 83, 85

Sainsbury -

Ferris: 2, 5
 Patricia: 2, 5

Schiesswohl -

Debra: 3, 5
 Gary Glen: 3, 5
 Ray Alvin: 2, 5

Ray Henry: 2, 5, 34
 Scott: 3, 5
 Steven: 3, 5
Sear -
 Allana: 2, 5
 Carl: 2, 5
 Gail: 2, 5
 Harold: 2, 5
 Jacquelyn: 2, 5
 Justin: 2, 5
 Kelly: 2, 5
 Mark: 2, 5
 Scott: 2, 5
 Scott: 2, 5
Smith -
 Luella: 77, 78, 80
Staab -
 Melba Jean: 3, 84
Stear -
 1st daughter: 2, 5, 18
 1st son: 2, 5, 17
 2nd daughter: 2, 5, 18
 2nd son: 2, 5, 18
 Alice L. (name: Allie Laretta Stear): 3, 5, 46
 Allie Laretta (aka: Alice L. Stear): 3, 5, 46
 Elair: 2, 5, 16
 Eleana A.: 3, 5, 13, 51
 Ethel Viola: 2, 5, 23, 27, 28
 Floretta M.: 3, 5, 11, 12, 36-38, 42, 43
 Glenn: 2, 5, 16
 Jacob: 3, 5, 46
 Jacob L.: 2, 5, 9, 10, 19-21, 25, 27, 28
 James: 2, 5, 10, 11, 29
 John Birt: 3, 5, 12, 45, 46
 John K. (aka: John Stear, Jr.): 2, 5, 7, 8, 15, 19, 20, 29, 32, 37, 38, 45, 46, 48, 49, 51
 John (name: John K. Stear): 2, 5, 7, 8, 15, 19, 20, 29, 32, 37, 38, 45, 46, 48, 49, 51
 Lawrence P.: 2, 5, 16, 17
 Lydia Jane: 2, 5, 11, 31, 32
 Mary Elizabeth: 3, 13, 14, 52, 53, 57-59, 61, 63-65, 67, 68, 70-73, 76, 83, 85-87
 Myrtle Esther: 2, 5, 22-26
 Rose: 2, 5, 16
 Verna L.: 3, 5, 13, 48, 49
 Wilmer C.: 2, 5, 9, 15, 17
Steer -
 John K.: 53, 57
Stiver -
 Abraham, Sr.: 52, 57
 Alfred Clarke: 3, 54, 57, 65-67
 Alfred R.: 3, 66, 67
 Allen: 3, 74, 76
 Dale: 3, 75, 76
 Elaine: 3, 79-82
 Frank: 3, 75, 76
 Frank (name: Martin Franklin Stiver): 3, 13, 14, 52, 53, 57-59, 61, 63-65, 67, 68, 70-73, 76, 83, 85-87
 Helen Catherine: 3, 56, 58, 59, 83-85
 Henry Ward: 3, 55, 56, 58, 73, 74, 76, 77, 80
 Henry Ward, Jr.: 3, 75-78, 80-82
 John N.: 3, 55, 58, 71, 72
 Justin: 3
 Kenneth: 3, 79, 80
 Leeucille: 3, 69, 70
 Luther Ray (aka: Luther Raymond Stiver): 3, 54, 55, 58, 68-70
 Luther Raymond (name: Luther Ray Stiver): 3, 54, 55, 58, 68-70
 Lydia Clarissa: 3, 54, 57, 63, 64
 Martin Franklin (aka: Frank Stiver): 3, 13, 14, 52, 53, 57-59, 61, 63-65, 67, 68, 70-73, 76, 83, 85-87
 May (aka: Nettie May Stiver): 3, 53, 54, 57, 60, 61
 Nettie May (name: May Stiver): 3, 53, 54, 57, 60, 61
 Vera L.: 3, 66, 67
Tharp -
 Beulah Evadne: 3, 5, 40
 Cyrus William: 2, 5, 22, 24, 25
 Lola Mae: 2, 6, 26
 Vivian Lucille: 2, 6, 26
Troxel -
 Lyal: 2, 6, 23, 27, 28
White -
 Fern: 3, 6, 49
 Florence V.: 3, 6, 50
 John A. S.: 3, 6, 13, 48, 49
 Mary G.: 3, 6, 49
 Virginia: 3, 6, 49
 Ward: 3, 6, 50
Winebark -
 Catharine (aka: Catharine Wineberg): 52, 57
Wineberg -
 Catharine (name: Catharine Winebark): 52, 57
Yarnell -
 Mary Jean: 2, 6